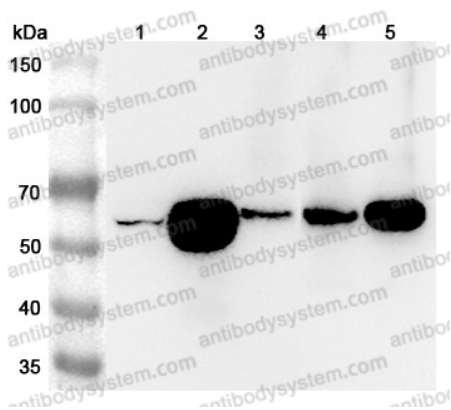


Anti-Human ATP6V1B2 Polyclonal Antibody

Summary

Catalog No.	PHD44901
Host species	Rabbit
Tested applications	ELISA: 1:4000-1:8000, IHC: 1:50-1:100, WB: 1:1000-1:4000
Species reactivity	Human
Immunogen	E. coli - derived recombinant Human ATP6V1B2 (Ser51-His511).
Form	Liquid
Storage buffer	0.01M PBS, pH 7.4, 50% Glycerol, 0.05% Proclin 300.
Clonality	Polyclonal
Isotype	IgG
Applications	ELISA, IHC, WB
Target	Endomembrane proton pump 58 kDa subunit, ATP6B2, V-type proton ATPase subunit B, brain isoform, HO57, VPP3, Vacuolar proton pump subunit B 2, ATP6V1B2, V-ATPase subunit B 2
Purification	Purified by antigen affinity column.
Accession	P21281
Stability and Storage	Use a manual defrost freezer and avoid repeated freeze thaw cycles. Store at 2 to 8°C for frequent use. Store at -20 to -80°C for twelve months from the date of receipt.
Note	For research use only.

Data Image



Western Blot

Various lysates were subjected to SDS PAGE followed by western blot with ATP6V1B2 antibody (PHD44901) at 1 μ g/ml.

Lane 1: 293T cell lysate

Lane 2: Mouse kidney lysate

Lane 3: Mouse brain lysate

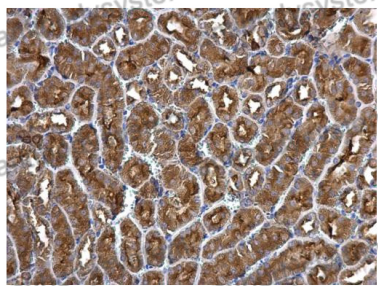
Lane 4: Rat kidney lysate

Lane 5: Rat brain lysate

Second Ab: Goat Anti-Rabbit IgG H&L Polyclonal antibody, HRP (PTB96431) at 0.1 μ g/mL.

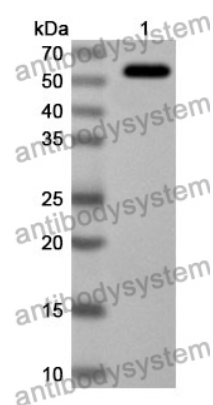
Predict MW: 57 kDa

Observed MW: 57 kDa



Immunohistochemical

Immunohistochemical analysis of mouse kidney tissue stained for ATP6V1B2 with PHD44901.



Western Blot

Recombinant Protein lysates were subjected to SDS PAGE followed by western blot with ATP6V1B2 antibody (PHD44901) at 1 µg/ml.

Lane 1: Recombinant Protein

Second Ab: Goat Anti-Rabbit IgG H&L Polyclonal antibody, HRP (PTB96431) at 0.1 µg/mL.

Predict MW: 54 kDa

Observed MW: 54 kDa