

Anti-Human RPSA Polyclonal Antibody

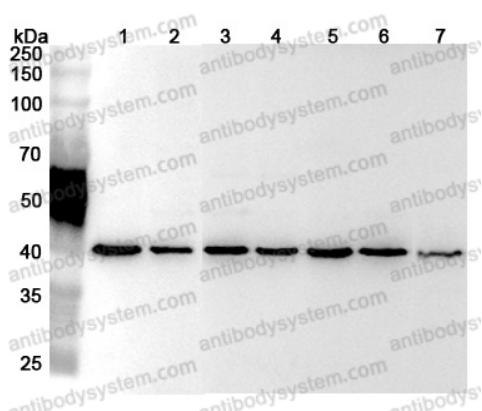
Summary

Catalog No.	PHC36801
Host species	Rabbit
Tested applications	ELISA: 1:4000-1:8000, IHC: 1:50-1:100, WB: 1:1000-1:4000
Species reactivity	Human
Immunogen	E. coli - derived recombinant Human RPSA (Met1-Arg186).
Form	Liquid
Storage buffer	0.01M PBS, pH 7.4, 50% Glycerol, 0.05% Proclin 300.
Clonality	Polyclonal
Isotype	IgG
Applications	ELISA, IHC, WB
Target	LAMBR, 37LRP, LBP/p40, Multidrug resistance-associated protein MGr1-Ag, Colon carcinoma laminin-binding protein, LamR, 67 kDa laminin receptor, NEM/1CHD4, Laminin receptor 1, Small ribosomal subunit protein uS2, Laminin-binding protein precursor p40, 40S ribosomal protein SA, 37/67 kDa laminin receptor, 67LR, 37 kDa laminin receptor precursor, RPSA, LRP/LR, LAMR1
Purification	Purified by antigen affinity column.
Accession	P08865
Stability and Storage	Use a manual defrost freezer and avoid repeated freeze thaw cycles. Store at 2 to 8°C for frequent use. Store at -20 to -80°C for twelve months from the date of receipt.

Note

For research use only.

Data Image



Western Blot

Various lysates were subjected to SDS PAGE followed by western blot with RPSA antibody (PHC36801) at 1 μ g/ml.

Lane 1: NIH3T3 cell lysate

Lane 2: Hela cell lysate

Lane 3: HepG2 cell lysate

Lane 4: Jurkat cell lysate

Lane 5: Raji cell lysate

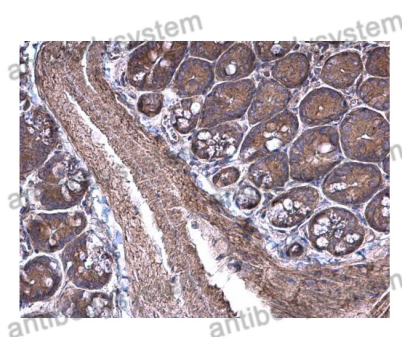
Lane 6: A549 cell lysate

Lane 7: Mouse liver lysate

Second Ab: Goat Anti-Rabbit IgG H&L Polyclonal antibody, HRP (PTB96431) at 0.1 μ g/mL.

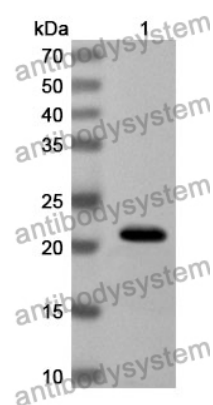
Predict MW: 33 kDa

Observed MW: 40 kDa



Immunohistochemical

Immunohistochemical analysis of mouse small intestine tissue stained for RPSA with PHC36801.



Western Blot

Recombinant Protein lysates were subjected to SDS PAGE followed by western blot with RPSA antibody (PHC36801) at 1 μ g/ml.

Lane 1: Recombinant Protein

Second Ab: Goat Anti-Rabbit IgG H&L Polyclonal antibody, HRP (PTB96431) at 0.1 μ g/mL.

Predict MW: 23 kDa

Observed MW: 23 kDa