

# Anti-Human SF3B3 Polyclonal Antibody

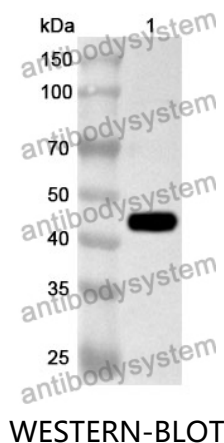
## Summary

---

|                              |   |
|------------------------------|---|
| <b>Catalog No.</b>           | PHH08601  |
| <b>Host species</b>          | Rabbit  |
| <b>Tested applications</b>   | ELISA: 1:4000-1:8000, IHC: 1:50-1:100, WB: 1:1000-1:4000  |
| <b>Species reactivity</b>    | Human   |
| <b>Immunogen</b>             | E. coli - derived recombinant Human SF3B3 (Met1-Ala362).  |
| <b>Form</b>                  | Liquid  |
| <b>Storage buffer</b>        | 0.01M PBS, pH 7.4, 50% Glycerol, 0.05% Proclin 300.   |
| <b>Clonality</b>             | Polyclonal  |
| <b>Isotype</b>               | IgG   |
| <b>Applications</b>          | ELISA, IHC, WB  |
| <b>Target</b>                | STAF130, KIAA0017, SF3B3, Splicing factor 3B subunit 3, SF3b130, Pre-mRNA-splicing factor SF3b 130 kDa subunit, SAP130, SAP 130, Spliceosome-associated protein 130       |
| <b>Purification</b>          | Purified by antigen affinity column.  |
| <b>Accession</b>             | Q15393  |
| <b>Stability and Storage</b> | Use a manual defrost freezer and avoid repeated freeze thaw cycles. Store at 2 to 8°C for frequent use. Store at -20 to -80°C for twelve months from the date of receipt. |
| <b>Note</b>                  | For research use only.  |

## Data Image

---



Recombinant Protein lysates were subjected to SDS PAGE followed by western blot with SF3B3 antibody (PHH08601) at 1 µg/ml.

Lane 1: Recombinant protein

Second Ab: Goat Anti-Rabbit IgG H&L Polyclonal antibody, HRP (PTB96431) at 0.1 µg/mL.

Predict MW: 43 kDa

Observed MW: 43 kDa

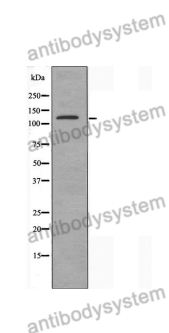
Various lysates were subjected to SDS PAGE followed by western blot with SF3B3 antibody (PHH08601) at 1 µg/ml.

Lane 1: HEK293

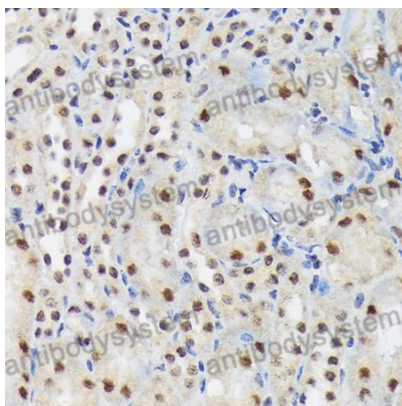
Second Ab: Goat Anti-Rabbit IgG H&L Polyclonal antibody, HRP (PTB96431) at 0.1 µg/mL.

Predict MW: 136 kDa

Observed MW: 136 kDa



Western Blot



Immunohistochemical

Immunohistochemical analysis of mouse kidney stained for SF3B3 with PHH08601.