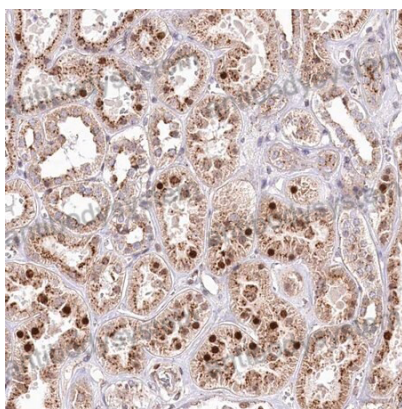
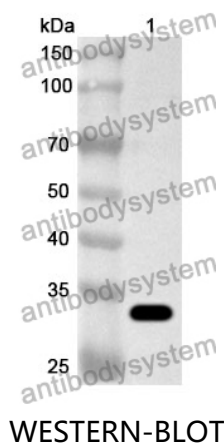


Anti-Human ZFYVE27 Polyclonal Antibody

Summary

Catalog No.	PHK46401
Host species	Rabbit
Tested applications	ELISA: 1:4000-1:8000, IHC: 1:50-1:100, WB: 1:1000-1:4000
Species reactivity	Human
Immunogen	E. coli - derived recombinant Human ZFYVE27 (Lys361-Lys411).
Form	Liquid
Storage buffer	0.01M PBS, pH 7.4, 50% Glycerol, 0.05% Proclin 300.
Clonality	Polyclonal
Isotype	IgG
Applications	ELISA, IHC, WB
Target	Spastic paraplegia 33 protein, SPG33, ZFYVE27, Protrudin, Zinc finger FYVE domain-containing protein 27
Purification	Purified by antigen affinity column.
Accession	Q5T4F4
Stability and Storage	Use a manual defrost freezer and avoid repeated freeze thaw cycles. Store at 2 to 8°C for frequent use. Store at -20 to -80°C for twelve months from the date of receipt.
Note	For research use only.

Data Image



Immunohistochemical

Recombinant Protein lysates were subjected to SDS PAGE followed by western blot with ZFYVE27 antibody (PHK46401) at 1 μ g/ml.

Lane 1: Recombinant protein

Second Ab: Goat Anti-Rabbit IgG H&L Polyclonal antibody, HRP (PTB96431) at 0.1 μ g/mL.

Predict MW: 34 kDa

Observed MW: 34 kDa

Immunohistochemical analysis of human kidney tissue stained for ZFYVE27 with PHK46401.