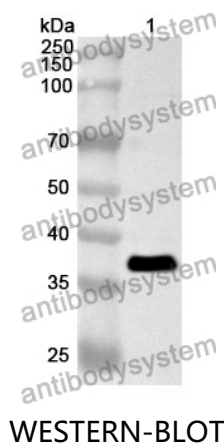


Anti-Human POT1 Polyclonal Antibody

Summary

Catalog No.	PHK46301
Host species	Rabbit
Tested applications	ELISA: 1:4000-1:8000, IHC: 1:50-1:100, WB: 1:1000-1:4000
Species reactivity	Human
Immunogen	E. coli - derived recombinant Human POT1 (Met1-Asp304).
Form	Liquid
Storage buffer	0.01M PBS, pH 7.4, 50% Glycerol, 0.05% Proclin 300.
Clonality	Polyclonal
Isotype	IgG
Applications	ELISA, IHC, WB
Target	Protection of telomeres protein 1, hPot1, POT1-like telomere end-binding protein, POT1
Purification	Purified by antigen affinity column.
Accession	Q9NUX5
Stability and Storage	Use a manual defrost freezer and avoid repeated freeze thaw cycles. Store at 2 to 8°C for frequent use. Store at -20 to -80°C for twelve months from the date of receipt.
Note	For research use only.

Data Image



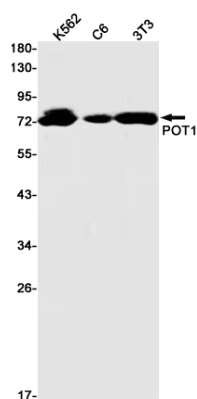
Recombinant Protein lysates were subjected to SDS PAGE followed by western blot with POT1 antibody (PHK46301) at 1 µg/ml.

Lane 1: Recombinant protein

Second Ab: Goat Anti-Rabbit IgG H&L Polyclonal antibody, HRP (PTB96431) at 0.1 µg/mL.

Predict MW: 36 kDa

Observed MW: 36 kDa



Various lysates were subjected to SDS PAGE followed by western blot with POT1 antibody (PHK46301) at 1 µg/ml.

Lane 1: K562

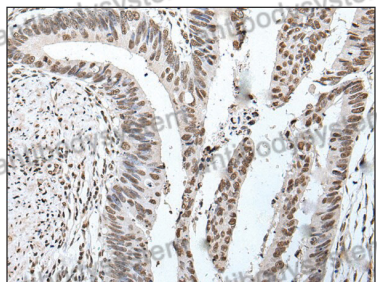
Lane 2: C6

Lane 3: NIH/3T3

Second Ab: Goat Anti-Rabbit IgG H&L Polyclonal antibody, HRP (PTB96431) at 0.1 µg/mL.

Predict MW: 71 kDa

Observed MW: 72 kDa



Immunohistochemical

Immunohistochemical analysis of human colorectal cancer stained for POT1 with PHK46301.