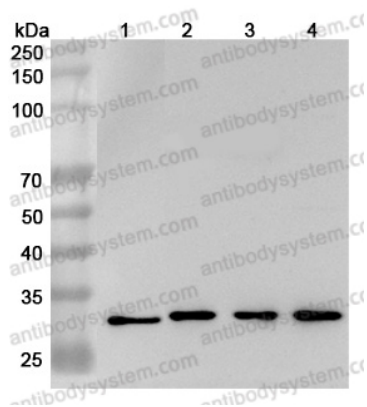


Anti-Human GSTO1 Polyclonal Antibody

Summary

Catalog No.	PHF67901
Host species	Rabbit
Tested applications	ELISA: 1:4000-1:8000, IHC: 1:50-1:100, WB: 1:1000-1:4000
Species reactivity	Human
Immunogen	E. coli - derived recombinant Human GSTO1 (Glu21-Leu241).
Form	Liquid
Storage buffer	0.01M PBS, pH 7.4, 50% Glycerol, 0.05% Proclin 300.
Clonality	Polyclonal
Isotype	IgG
Applications	ELISA, IHC, WB
Target	Glutathione-dependent dehydroascorbate reductase, Glutathione S-transferase omega-1, Glutathione S-transferase omega 1-1, GSTO-1, Monomethylarsonic acid reductase, MMA(V) reductase, GSTO 1-1, SPG-R, GSTTLP28, S-(Phenacyl)glutathione reductase, GSTO1
Purification	Purified by antigen affinity column.
Accession	P78417
Stability and Storage	Use a manual defrost freezer and avoid repeated freeze thaw cycles. Store at 2 to 8°C for frequent use. Store at -20 to -80°C for twelve months from the date of receipt.
Note	For research use only.

Data Image



Western Blot

Various lysates were subjected to SDS PAGE followed by western blot with GSTO1 antibody (PHF67901) at 1 μ g/ml.

Lane 1: Jurkat cell lysate

Lane 2: U937 cell lysate

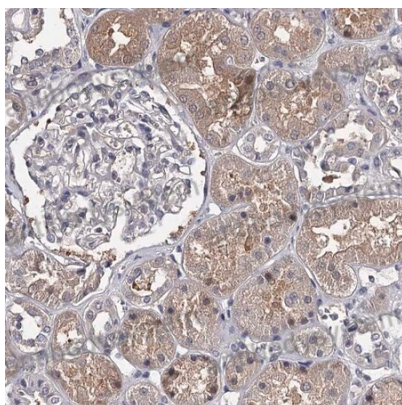
Lane 3: Raji cell lysate

Lane 4: NIH3T3 cell lysate

Second Ab: Goat Anti-Rabbit IgG H&L Polyclonal antibody, HRP (PTB96431) at 0.1 μ g/mL.

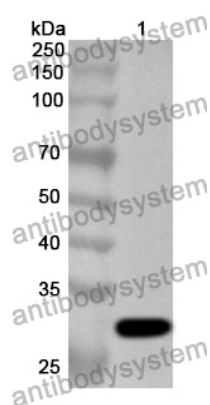
Predict MW: 28 kDa

Observed MW: 28 kDa



Immunohistochemical

Immunohistochemical analysis of human kidney tissue stained for GSTO1 with PHF67901.



Western Blot

Recombinant Protein lysates were subjected to SDS PAGE followed by western blot with GSTO1 antibody (PHF67901) at 1 μ g/ml.

Lane 1: Recombinant Protein

Second Ab: Goat Anti-Rabbit IgG H&L Polyclonal antibody, HRP (PTB96431) at 0.1 μ g/mL.

Predict MW: 28 kDa

Observed MW: 28 kDa