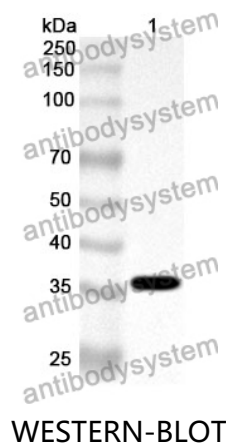


Anti-Human EIF2B1 Polyclonal Antibody

Summary

Catalog No.	PHG76101
Host species	Rabbit
Tested applications	ELISA: 1:4000-1:8000, IHC: 1:50-1:100, WB: 1:1000-1:4000
Species reactivity	Human
Immunogen	E. coli - derived recombinant Human EIF2B1 (Met1-Leu305).
Form	Liquid
Storage buffer	0.01M PBS, pH 7.4, 50% Glycerol, 0.05% Proclin 300.
Clonality	Polyclonal
Isotype	IgG
Applications	ELISA, IHC, WB
Target	Translation initiation factor eIF-2B subunit alpha, eIF-2B GDP-GTP exchange factor subunit alpha, EIF2BA, EIF2B1
Purification	Purified by antigen affinity column.
Accession	Q14232
Stability and Storage	Use a manual defrost freezer and avoid repeated freeze thaw cycles. Store at 2 to 8°C for frequent use. Store at -20 to -80°C for twelve months from the date of receipt.
Note	For research use only.

Data Image



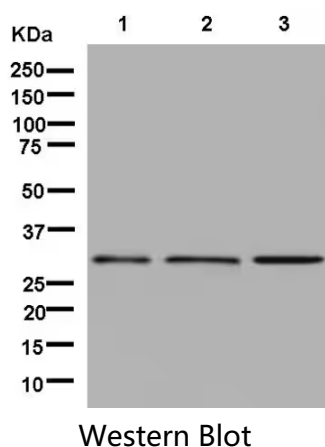
Recombinant Protein lysates were subjected to SDS PAGE followed by western blot with EIF2B1 antibody (PHG76101) at 1 µg/ml.

Lane 1: Recombinant protein

Second Ab: Goat Anti-Rabbit IgG H&L Polyclonal antibody, HRP (PTB96431) at 0.1 µg/mL.

Predict MW: 36 kDa

Observed MW: 36 kDa



Various lysates were subjected to SDS PAGE followed by western blot with EIF2B1 antibody (PHG76101) at 1 µg/ml.

Lane 1: SH-SY5Y

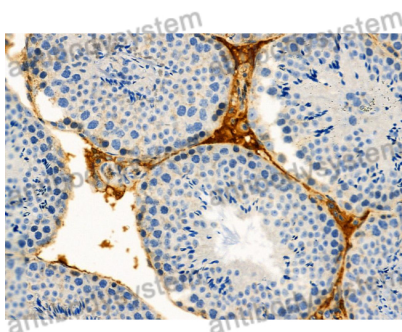
Lane 2: Jurkat

Lane 3: MCF7

Second Ab: Goat Anti-Rabbit IgG H&L Polyclonal antibody, HRP (PTB96431) at 0.1 µg/mL.

Predict MW: 34 kDa

Observed MW: 30 kDa



Immunohistochemical

Immunohistochemical analysis of mouse testis stained for EIF2B1 with PHG76101.