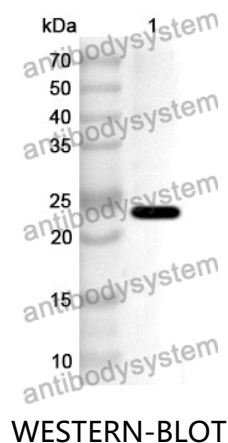


Anti-Human LARP7 Polyclonal Antibody

Summary

Catalog No.	PHH77301
Host species	Rabbit
Tested applications	ELISA: 1:4000-1:8000, IHC: 1:50-1:100, WB: 1:1000-1:4000
Species reactivity	Human
Immunogen	E. coli - derived recombinant Human LARP7 (Met1-Asn187).
Form	Liquid
Storage buffer	0.01M PBS, pH 7.4, 50% Glycerol, 0.05% Proclin 300.
Clonality	Polyclonal
Isotype	IgG
Applications	ELISA, IHC, WB
Target	La ribonucleoprotein domain family member 7, La-related protein 7, hLARP7, P-TEFb-interaction protein for 7SK stability, LARP7, PIP7S
Purification	Purified by antigen affinity column.
Accession	Q4G0J3
Stability and Storage	Use a manual defrost freezer and avoid repeated freeze thaw cycles. Store at 2 to 8°C for frequent use. Store at -20 to -80°C for twelve months from the date of receipt.
Note	For research use only.

Data Image



Recombinant Protein lysates were subjected to SDS PAGE followed by western blot with LARP7 antibody (PHH77301) at 1 µg/ml.

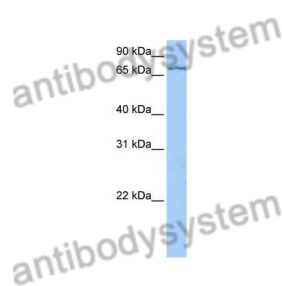
Lane 1: Recombinant protein

Second Ab: Goat Anti-Rabbit IgG H&L Polyclonal antibody, HRP (PTB96431) at 0.1 µg/mL.

Predict MW: 24 kDa

Observed MW: 24 kDa

Various lysates were subjected to SDS PAGE followed by western blot with LARP7 antibody (PHH77301) at 1 µg/ml.

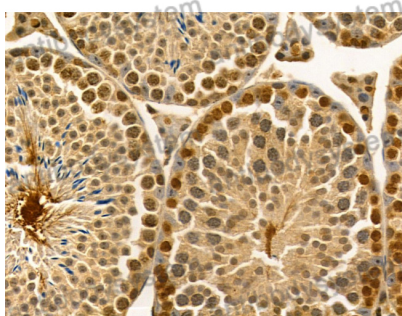


Lane 1: Hela

Second Ab: Goat Anti-Rabbit IgG H&L Polyclonal antibody, HRP (PTB96431) at 0.1 µg/mL.

Predict MW: 70 kDa

Observed MW: 70 kDa



Immunohistochemical analysis of mouse testis stained for LARP7 with PHH77301.

Immunohistochemical