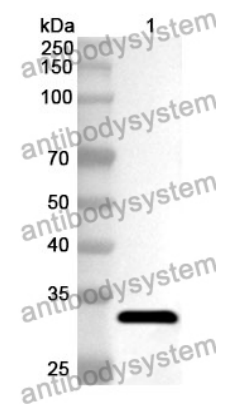


Anti-Human ATF6B Polyclonal Antibody

Summary

Catalog No.	PHK45401
Host species	Rabbit
Tested applications	ELISA: 1:4000-1:8000, IHC: 1:50-1:100, WB: 1:1000-1:4000
Species reactivity	Human
Immunogen	E. coli - derived recombinant Human ATF6B (Ala2-Arg50).
Form	Liquid
Storage buffer	0.01M PBS, pH 7.4, 50% Glycerol, 0.05% Proclin 300.
Clonality	Polyclonal
Isotype	IgG
Applications	ELISA, IHC, WB
Target	CREBL1, Protein G13, cAMP-responsive element-binding protein-like 1, Activating transcription factor 6 beta, cAMP response element-binding protein-related protein, Cyclic AMP-dependent transcription factor ATF-6 beta, G13, ATF6B, Creb-rp, ATF6-beta, cAMP-dependent transcription factor ATF-6 beta
Purification	Purified by antigen affinity column.
Accession	Q99941
Stability and Storage	Use a manual defrost freezer and avoid repeated freeze thaw cycles. Store at 2 to 8°C for frequent use. Store at -20 to -80°C for twelve months from the date of receipt.
Note	For research use only.

Data Image



WESTERN-BLOT

Recombinant Protein lysates were subjected to SDS PAGE followed by western blot with ATF6B antibody (PHK45401) at 1 µg/ml.

Lane 1: Recombinant protein

Second Ab: Goat Anti-Rabbit IgG H&L Polyclonal antibody, HRP (PTB96431) at 0.1 µg/mL.

Predict MW: 34 kDa

Observed MW: 34 kDa

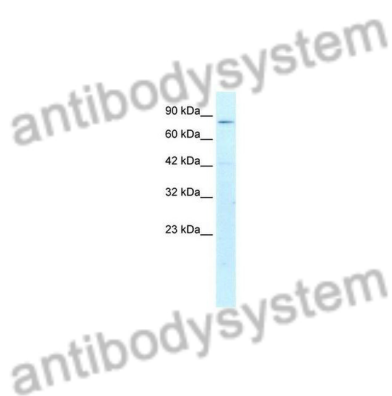
Various lysates were subjected to SDS PAGE followed by western blot with ATF6B antibody (PHK45401) at 1 µg/ml.

Lane 1: HepG2

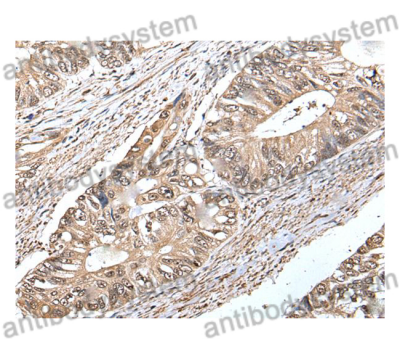
Second Ab: Goat Anti-Rabbit IgG H&L Polyclonal antibody, HRP (PTB96431) at 0.1 µg/mL.

Predict MW: 77 kDa

Observed MW: 77 kDa



Western Blot



Immunohistochemical

Immunohistochemical analysis of human colorectal cancer stained for ATF6B with PHK45401.