

Anti-Human EIF2D Polyclonal Antibody

Summary

Catalog No.	PHE30201
Host species	Rabbit
Tested applications	ELISA: 1:4000-1:8000, IHC: 1:50-1:100, WB: 1:1000-1:4000
Species reactivity	Human
Immunogen	E. coli - derived recombinant Human EIF2D (Lys45-Lys182).
Form	Liquid
Storage buffer	0.01M PBS, pH 7.4, 50% Glycerol, 0.05% Proclin 300.
Clonality	Polyclonal
Isotype	IgG
Applications	ELISA, IHC, WB
Target	LGTN, Ligatin, HCA56, Hepatocellular carcinoma-associated antigen 56, Eukaryotic translation initiation factor 2D, eIF2d, EIF2D
Purification	Purified by antigen affinity column.
Accession	P41214
Stability and Storage	Use a manual defrost freezer and avoid repeated freeze thaw cycles. Store at 2 to 8°C for frequent use. Store at -20 to -80°C for twelve months from the date of receipt.
Note	For research use only.

Data Image



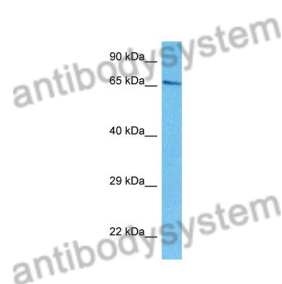
Recombinant Protein lysates were subjected to SDS PAGE followed by western blot with EIF2D antibody (PHE30201) at 1 µg/ml.

Lane 1: Recombinant protein

Second Ab: Goat Anti-Rabbit IgG H&L Polyclonal antibody, HRP (PTB96431) at 0.1 µg/mL.

Predict MW: 17 kDa

Observed MW: 17 kDa



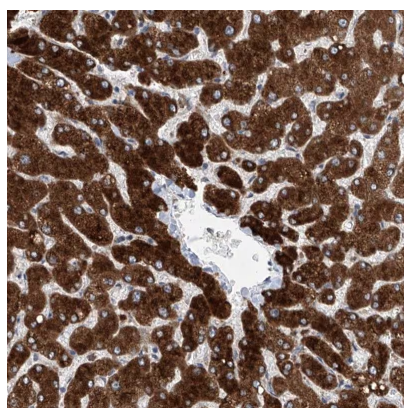
Various lysates were subjected to SDS PAGE followed by western blot with EIF2D antibody (PHE30201) at 1 µg/ml.

Lane 1: HepG2

Second Ab: Goat Anti-Rabbit IgG H&L Polyclonal antibody, HRP (PTB96431) at 0.1 µg/mL.

Predict MW: 65 kDa

Observed MW: 66 kDa



Immunohistochemical

Immunohistochemical analysis of human liver stained for EIF2D with PHE30201.