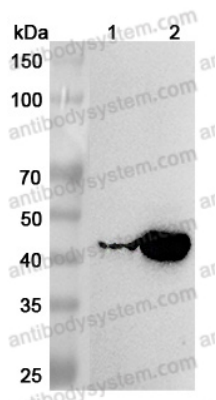


Anti-KYAT1 Polyclonal Antibody

Summary

Catalog No.	PHH36602
Host species	Rabbit
Tested applications	ELISA: 1:4000-1:8000, IHC: 1:50-1:100, WB: 1:1000-1:4000
Species reactivity	Human, Mouse, Rat
Immunogen	E. coli - derived recombinant Human KYAT1 (Met1-Leu372).
Form	Liquid
Storage buffer	0.01M PBS, pH 7.4, 50% Glycerol, 0.05% Proclin 300.
Clonality	Polyclonal
Isotype	IgG
Applications	ELISA, IHC, WB
Target	Kynurenine--oxoglutarate transaminase 1, 2.6.1.7, Cysteine-S-conjugate beta-lyase, 4.4.1.13, Glutamine transaminase K, GTK, Glutamine--phenylpyruvate transaminase, 2.6.1.64, Kynurenine aminotransferase 1, Kynurenine aminotransferase I, KATI, Kynurenine--oxoglutarate transaminase I, KYAT1, CCBL1
Purification	Purified by antigen affinity column.
Accession	Q16773-2
Stability and Storage	Use a manual defrost freezer and avoid repeated freeze thaw cycles. Store at 2 to 8°C for frequent use. Store at -20 to -80°C for twelve months from the date of receipt.
Note	For research use only.

Data Image



Western Blot

Various lysates were subjected to SDS PAGE followed by western blot with KYAT1 antibody (PHH36602) at 1µg/ml.

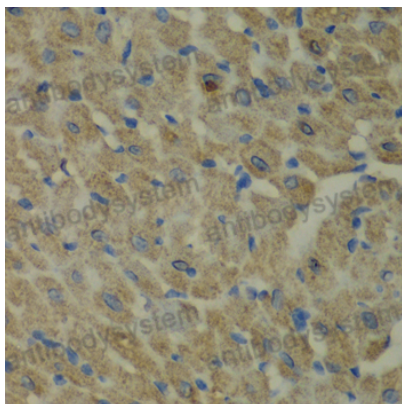
Lane 1: Rat liver lysate

Lane 2: Rat kidney lysate

Second Ab: Goat Anti-Rabbit IgG H&L Polyclonal antibody, HRP (PTB96431) at 0.1 µg/mL.

Predict MW: 48 kDa

Observed MW: 48 kDa



Immunohistochemical

Immunohistochemical analysis of mouse heart tissue stained for KYAT1 with PHH36602.



Western Blot

Recombinant Protein lysates were subjected to SDS PAGE followed by western blot with KYAT1 antibody (PHH36602) at 1 μ g/ml.

Lane 1: Recombinant Protein

Second Ab: Goat Anti-Rabbit IgG H&L Polyclonal antibody, HRP (PTB96431) at 0.1 μ g/mL.

Predict MW: 45 kDa

Observed MW: 45 kDa