

# Anti-ANXA7 Polyclonal Antibody

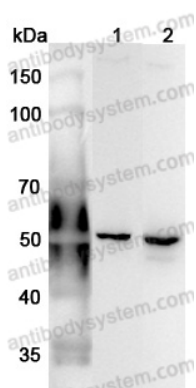
## Summary

---

<b>Catalog No.</b>	PHD37302
<b>Host species</b>	Rabbit
<b>Tested applications</b>	ELISA: 1:4000-1:8000, IHC: 1:50-1:100, WB: 1:1000-1:4000
<b>Species reactivity</b>	Human, Mouse, Rat
<b>Immunogen</b>	E. coli - derived recombinant Human ANXA7 (Asp186-Gln488).
<b>Form</b>	Liquid
<b>Storage buffer</b>	0.01M PBS, pH 7.4, 50% Glycerol, 0.05% Proclin 300.
<b>Clonality</b>	Polyclonal
<b>Isotype</b>	IgG
<b>Applications</b>	ELISA, IHC, WB
<b>Target</b>	ANX7, Annexin A7, SNX, Annexin VII, Synexin, Annexin-7, ANXA7
<b>Purification</b>	Purified by antigen affinity column.
<b>Accession</b>	P20073
<b>Stability and Storage</b>	Use a manual defrost freezer and avoid repeated freeze thaw cycles. Store at 2 to 8°C for frequent use. Store at -20 to -80°C for twelve months from the date of receipt.
<b>Note</b>	For research use only.

## Data Image

---



Western Blot

Various lysates were subjected to SDS PAGE followed by western blot with ANXA7 antibody (PHD37302) at 1 µg/ml.

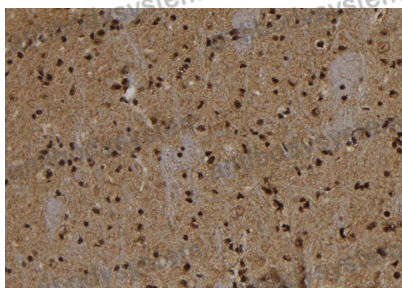
Lane 1: Mouse brain lysate

Lane 2: Rat brain lysate

Second Ab: Goat Anti-Rabbit IgG H&L Polyclonal antibody, HRP (PTB96431) at 0.1 µg/mL.

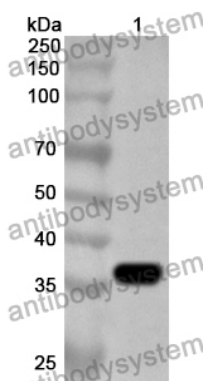
Predict MW: 53 kDa

Observed MW: 53 kDa



Immunohistochemical

Immunohistochemical analysis of rat brain stained for ANXA7 with PHD37302.



Western Blot

Recombinant Protein lysates were subjected to SDS PAGE followed by western blot with ANXA7 antibody (PHD37302) at 1 µg/ml.

Lane 1: Recombinant Protein

Second Ab: Goat Anti-Rabbit IgG H&L Polyclonal antibody, HRP (PTB96431) at 0.1 µg/mL.

Predict MW: 37 kDa

Observed MW: 37 kDa