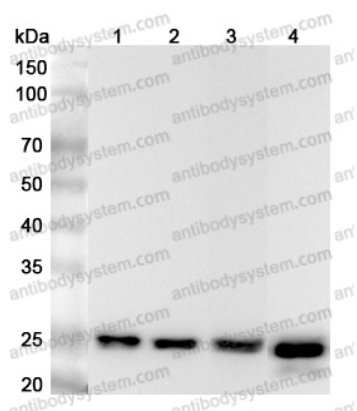


Anti-Human ARHGDIA Polyclonal Antibody

Summary

Catalog No.	PHE92301
Host species	Rabbit
Tested applications	ELISA: 1:4000-1:8000, IHC: 1:50-1:100, WB: 1:1000-1:4000
Species reactivity	Human
Immunogen	E. coli - derived recombinant Human ARHGDIA (Asn69-Asp204).
Form	Liquid
Storage buffer	0.01M PBS, pH 7.4, 50% Glycerol, 0.05% Proclin 300.
Clonality	Polyclonal
Isotype	IgG
Applications	ELISA, IHC, WB
Target	Rho GDP-dissociation inhibitor 1, GDIA1, Rho GDI 1, Rho-GDI alpha, ARHGDIA
Purification	Purified by antigen affinity column.
Accession	P52565
Stability and Storage	Use a manual defrost freezer and avoid repeated freeze thaw cycles. Store at 2 to 8°C for frequent use. Store at -20 to -80°C for twelve months from the date of receipt.
Note	For research use only.

Data Image



Western Blot

Various lysates were subjected to SDS PAGE followed by western blot with ARHGDIA antibody (PHE92301) at 1 μ g/ml.

Lane 1: HL-60 cell lysate

Lane 2: NIH3T3 cell lysate

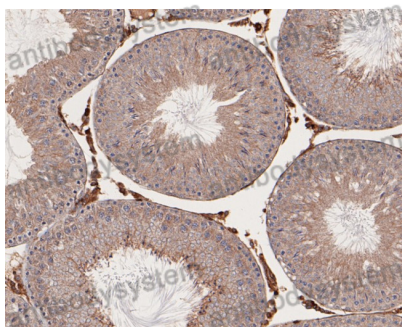
Lane 3: Mouse lung lysate

Lane 4: Rat lung lysate

Second Ab: Goat Anti-Rabbit IgG H&L Polyclonal antibody, HRP (PTB96431) at 0.1 μ g/mL.

Predict MW: 23 kDa

Observed MW: 25 kDa



Immunohistochemical

Immunohistochemical analysis of rat testis stained for ARHGDIA with PHE92301.



Western Blot

Recombinant Protein lysates were subjected to SDS PAGE followed by western blot with ARHGDIA antibody (PHE92301) at 1 μ g/ml.

Lane 1: Recombinant Protein

Second Ab: Goat Anti-Rabbit IgG H&L Polyclonal antibody, HRP (PTB96431) at 0.1 μ g/mL.

Predict MW: 18 kDa

Observed MW: 18 kDa