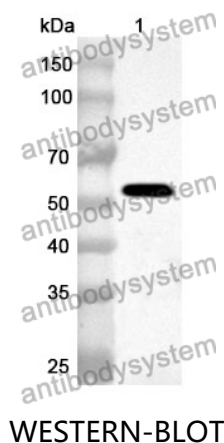


Anti-Human CYP2C8 Polyclonal Antibody

Summary

Catalog No.	PHC82201
Host species	Rabbit
Tested applications	ELISA: 1:4000-1:8000, IHC: 1:50-1:100, WB: 1:1000-1:4000
Species reactivity	Human
Immunogen	E. coli - derived recombinant Human CYP2C8 (Gly40-Val490).
Form	Liquid
Storage buffer	0.01M PBS, pH 7.4, 50% Glycerol, 0.05% Proclin 300.
Clonality	Polyclonal
Isotype	IgG
Applications	ELISA, IHC, WB
Target	CYP2C8, Cytochrome P450 MP-12, Cytochrome P450 IIC2, Cytochrome P450 MP-20, Cytochrome P450 2C8, CYP1IC8, S-mephenytoin 4-hydroxylase, Cytochrome P450 form 1
Purification	Purified by antigen affinity column.
Accession	P10632
Stability and Storage	Use a manual defrost freezer and avoid repeated freeze thaw cycles. Store at 2 to 8°C for frequent use. Store at -20 to -80°C for twelve months from the date of receipt.
Note	For research use only.

Data Image



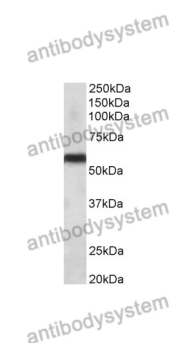
Recombinant Protein lysates were subjected to SDS PAGE followed by western blot with CYP2C8 antibody (PHC82201) at 1 μ g/ml.

Lane 1: Recombinant protein

Second Ab: Goat Anti-Rabbit IgG H&L Polyclonal antibody, HRP (PTB96431) at 0.1 μ g/mL.

Predict MW: 54 kDa

Observed MW: 54 kDa



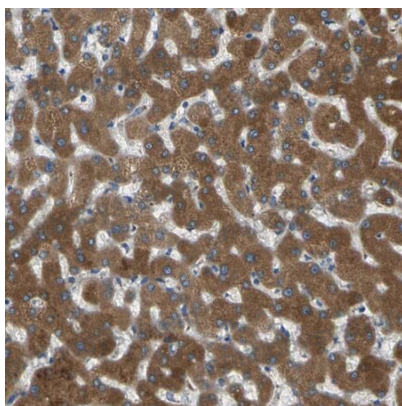
Various lysates were subjected to SDS PAGE followed by western blot with CYP2C8 antibody (PHC82201) at 1 μ g/ml.

Lane 1: Human liver

Second Ab: Goat Anti-Rabbit IgG H&L Polyclonal antibody, HRP (PTB96431) at 0.1 μ g/mL.

Predict MW: 56 kDa

Observed MW: 56 kDa



Immunohistochemical

Immunohistochemical analysis of human liver tissue stained for CYP2C8 with PHC82201.