

Anti-Human SNAPIN Polyclonal Antibody

Summary

Catalog No.	PHB60501
Host species	Rabbit
Tested applications	ELISA: 1:4000-1:8000, IHC: 1:50-1:100, WB: 1:1000-1:4000
Species reactivity	Human
Immunogen	E. coli - derived recombinant Human SNAPIN (Gly21-Lys136).
Form	Liquid
Storage buffer	0.01M PBS, pH 7.4, 50% Glycerol, 0.05% Proclin 300.
Clonality	Polyclonal
Isotype	IgG
Applications	ELISA, IHC, WB
Target	Synaptosomal-associated protein 25-binding protein, SNAPIN, Biogenesis of lysosome-related organelles complex 1 subunit 7, SNARE-associated protein Snapin, BLOC-1 subunit 7, BLOC1S7, SNAPAP, SNAP25BP, SNAP-associated protein
Purification	Purified by antigen affinity column.
Accession	O95295
Stability and Storage	Use a manual defrost freezer and avoid repeated freeze thaw cycles. Store at 2 to 8°C for frequent use. Store at -20 to -80°C for twelve months from the date of receipt.
Note	For research use only.

Data Image



WESTERN-BLOT

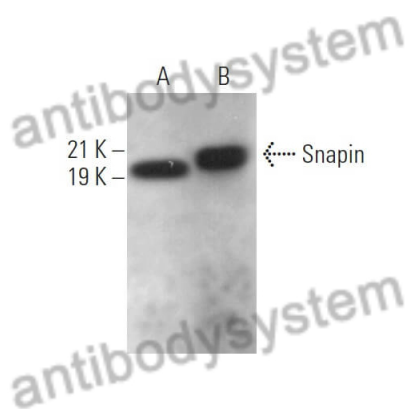
Recombinant Protein lysates were subjected to SDS PAGE followed by western blot with SNAPIN antibody (PHB60501) at 1 μ g/ml.

Lane 1: Recombinant protein

Second Ab: Goat Anti-Rabbit IgG H&L Polyclonal antibody, HRP (PTB96431) at 0.1 μ g/mL.

Predict MW: 16 kDa

Observed MW: 16 kDa



Western Blot

Various lysates were subjected to SDS PAGE followed by western blot with SNAPIN antibody (PHB60501) at 1 μ g/ml.

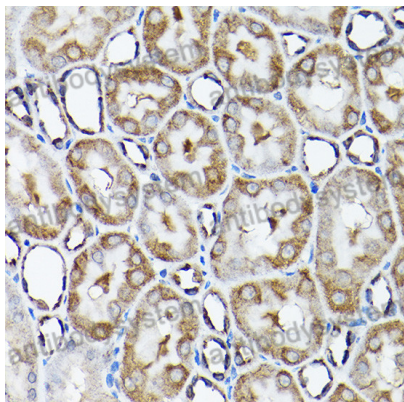
Lane 1: Ramos

Lane 2: ZR-75-1

Second Ab: Goat Anti-Rabbit IgG H&L Polyclonal antibody, HRP (PTB96431) at 0.1 μ g/mL.

Predict MW: 15 kDa

Observed MW: 20 kDa



Immunohistochemical analysis of rat kidney tissue stained for SNAPIN with PHB60501.

Immunohistochemical