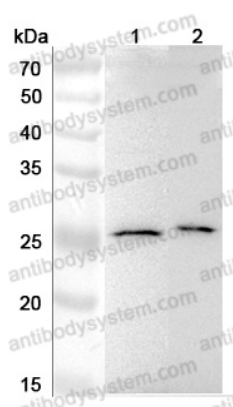


Anti-Human MAD2L2 Polyclonal Antibody

Summary

Catalog No.	PHK44601
Host species	Rabbit
Tested applications	ELISA: 1:4000-1:8000, IHC: 1:50-1:100, WB: 1:1000-1:4000
Species reactivity	Human
Immunogen	E. coli - derived recombinant Human MAD2L2 (Met1-Ser211).
Form	Liquid
Storage buffer	0.01M PBS, pH 7.4, 50% Glycerol, 0.05% Proclin 300.
Clonality	Polyclonal
Isotype	IgG
Applications	ELISA, IHC, WB
Target	Mitotic arrest deficient 2-like protein 2, Mitotic spindle assembly checkpoint protein MAD2B, MAD2L2, MAD2-like protein 2, hREV7, REV7, REV7 homolog, MAD2B
Purification	Purified by antigen affinity column.
Accession	Q9UI95
Stability and Storage	Use a manual defrost freezer and avoid repeated freeze thaw cycles. Store at 2 to 8°C for frequent use. Store at -20 to -80°C for twelve months from the date of receipt.
Note	For research use only.

Data Image



Western Blot

Various lysates were subjected to SDS PAGE followed by western blot with MAD2L2 antibody (PHK44601) at 1 µg/ml.

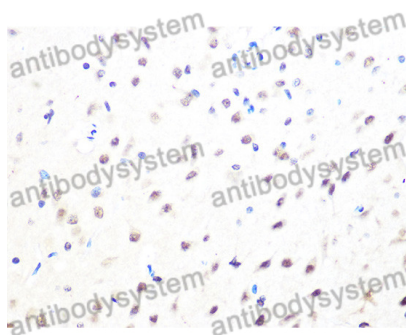
Lane 1: K562 cell lysate

Lane 2: 293T cell lysate

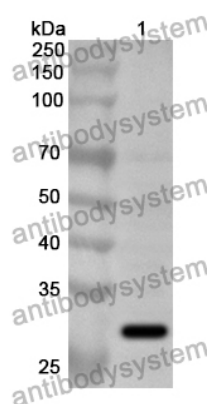
Second Ab: Goat Anti-Rabbit IgG H&L Polyclonal antibody, HRP (PTB96431) at 0.1 µg/mL.

Predict MW: 25 kDa

Observed MW: 25 kDa



Immunohistochemical



Western Blot

Recombinant Protein lysates were subjected to SDS PAGE followed by western blot with MAD2L2 antibody (PHK44601) at 1 µg/ml.

Lane 1: Recombinant Protein

Second Ab: Goat Anti-Rabbit IgG H&L Polyclonal antibody, HRP (PTB96431) at 0.1 µg/mL.

Predict MW: 27 kDa

Observed MW: 27 kDa