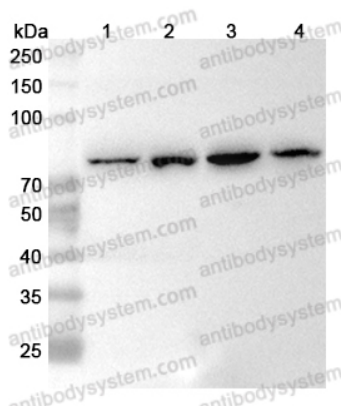


Anti-Human KIF3A Polyclonal Antibody

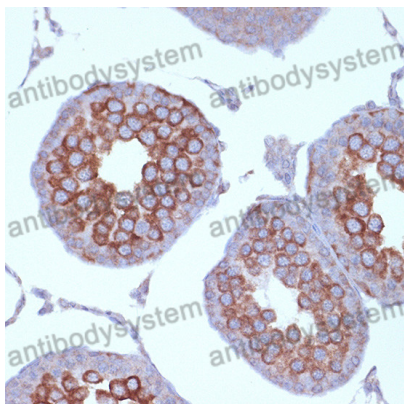
Summary

Catalog No.	PHK44401
Host species	Rabbit
Tested applications	ELISA: 1:4000-1:8000, IHC: 1:50-1:100, WB: 1:1000-1:4000
Species reactivity	Human
Immunogen	E. coli - derived recombinant Human KIF3A (Lys16-Ile345).
Form	Liquid
Storage buffer	0.01M PBS, pH 7.4, 50% Glycerol, 0.05% Proclin 300.
Clonality	Polyclonal
Isotype	IgG
Applications	ELISA, IHC, WB
Target	Microtubule plus end-directed kinesin motor 3A, Kinesin-like protein KIF3A, KIF3A, KIF3
Purification	Purified by antigen affinity column.
Accession	Q9Y496
Stability and Storage	Use a manual defrost freezer and avoid repeated freeze thaw cycles. Store at 2 to 8°C for frequent use. Store at -20 to -80°C for twelve months from the date of receipt.
Note	For research use only.

Data Image



Western Blot



Immunohistochemical

Various lysates were subjected to SDS PAGE followed by western blot with KIF3A antibody (PHK44401) at 1 μ g/ml.

Lane 1: Mouse brain lysate

Lane 2: Mouse cerebellum lysate

Lane 3: Rat brain lysate

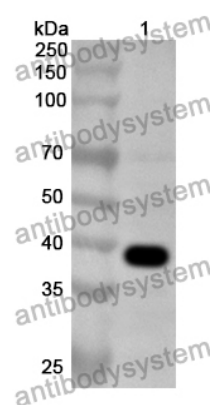
Lane 4: Rat cerebellum lysate

Second Ab: Goat Anti-Rabbit IgG H&L Polyclonal antibody, HRP (PTB96431) at 0.1 μ g/mL.

Predict MW: 80 kDa

Observed MW: 80 kDa

Immunohistochemical analysis of rat testis stained for KIF3A with PHK44401.



Western Blot

Recombinant Protein lysates were subjected to SDS PAGE followed by western blot with KIF3A antibody (PHK44401) at 1 μ g/ml.

Lane 1: Recombinant Protein

Second Ab: Goat Anti-Rabbit IgG H&L Polyclonal antibody, HRP (PTB96431) at 0.1 μ g/mL.

Predict MW: 39 kDa

Observed MW: 39 kDa