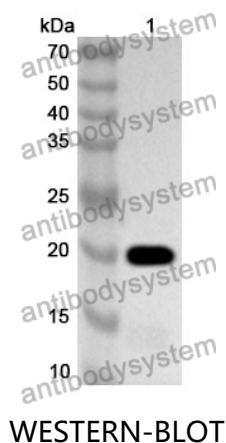


Anti-Human ERAL1 Polyclonal Antibody

Summary

Catalog No.	PHB26701
Host species	Rabbit
Tested applications	ELISA: 1:4000-1:8000, IHC: 1:50-1:100, WB: 1:1000-1:4000
Species reactivity	Human
Immunogen	E. coli - derived recombinant Human ERAL1 (Arg94-Glu256).
Form	Liquid
Storage buffer	0.01M PBS, pH 7.4, 50% Glycerol, 0.05% Proclin 300.
Clonality	Polyclonal
Isotype	IgG
Applications	ELISA, IHC, WB
Target	Conserved ERA-like GTPase, HERA, GTPase Era, mitochondrial, ERA-like protein 1, H-ERA, ERAL1, hERA, ERA-W, CEGA
Purification	Purified by antigen affinity column.
Accession	O75616
Stability and Storage	Use a manual defrost freezer and avoid repeated freeze thaw cycles. Store at 2 to 8°C for frequent use. Store at -20 to -80°C for twelve months from the date of receipt.
Note	For research use only.

Data Image



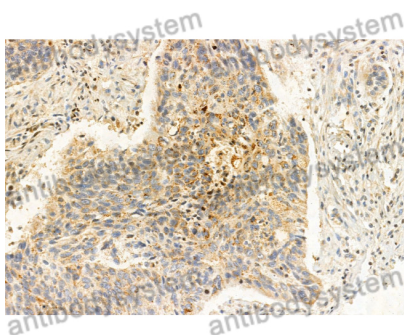
Recombinant Protein lysates were subjected to SDS PAGE followed by western blot with ERAL1 antibody (PHB26701) at 1 μ g/ml.

Lane 1: Recombinant protein

Second Ab: Goat Anti-Rabbit IgG H&L Polyclonal antibody, HRP (PTB96431) at 0.1 μ g/mL.

Predict MW: 21 kDa

Observed MW: 21 kDa



Immunohistochemical analysis of human lung cancer tissue stained for ERAL1 with PHB26701.

Immunohistochemical