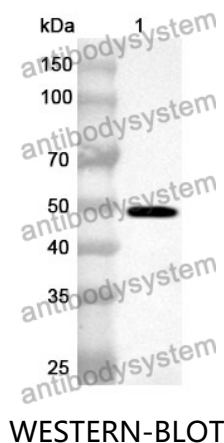


Anti-Human CDC6 Polyclonal Antibody

Summary

Catalog No.	PHK44101
Host species	Rabbit
Tested applications	ELISA: 1:4000-1:8000, IHC: 1:50-1:100, WB: 1:1000-1:4000
Species reactivity	Human
Immunogen	E. coli - derived recombinant Human CDC6 (Lys151-Pro560).
Form	Liquid
Storage buffer	0.01M PBS, pH 7.4, 50% Glycerol, 0.05% Proclin 300.
Clonality	Polyclonal
Isotype	IgG
Applications	ELISA, IHC, WB
Target	HsCdc18, CDC18L, CDC6, HsCDC6, CDC6-related protein, Cell division control protein 6 homolog, p62(cdc6), Cdc18-related protein
Purification	Purified by antigen affinity column.
Accession	Q99741
Stability and Storage	Use a manual defrost freezer and avoid repeated freeze thaw cycles. Store at 2 to 8°C for frequent use. Store at -20 to -80°C for twelve months from the date of receipt.
Note	For research use only.

Data Image



Recombinant Protein lysates were subjected to SDS PAGE followed by western blot with CDC6 antibody (PHK44101) at 1 μ g/ml.

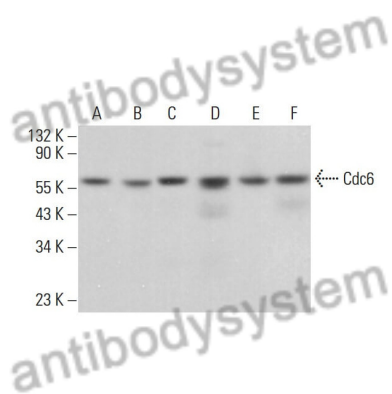
Lane 1: Recombinant protein

Second Ab: Goat Anti-Rabbit IgG H&L Polyclonal antibody, HRP (PTB96431) at 0.1 μ g/mL.

Predict MW: 48 kDa

Observed MW: 48 kDa

Various lysates were subjected to SDS PAGE followed by western blot with CDC6 antibody (PHK44101) at 1 μ g/ml.



Lane 1: Hela

Lane 2: IMR-32

Lane 3: Neuro-2A

Lane 4: SK-BR-3

Lane 5: U-87 MG

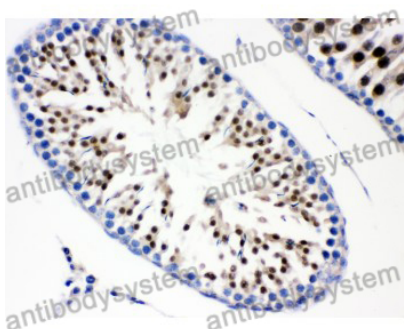
Lane 6: C6

Second Ab: Goat Anti-Rabbit IgG H&L Polyclonal antibody, HRP (PTB96431) at 0.1 μ g/mL.

Predict MW: 63 kDa

Observed MW: 63 kDa

Western Blot



Immunohistochemical analysis of rat testis stained for CDC6 with PHK44101.

Immunohistochemical