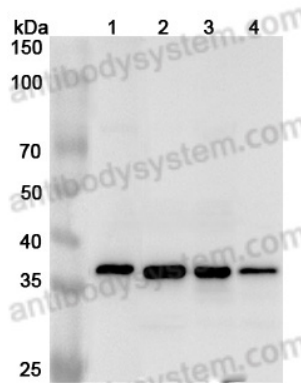


Anti-Human APEX1 Polyclonal Antibody

Summary

Catalog No.	PHD74801
Host species	Rabbit
Tested applications	ELISA: 1:4000-1:8000, IHC: 1:50-1:100, WB: 1:1000-1:4000
Species reactivity	Human
Immunogen	E. coli - derived recombinant Human APEX1 (Thr61-Leu318).
Form	Liquid
Storage buffer	0.01M PBS, pH 7.4, 50% Glycerol, 0.05% Proclin 300.
Clonality	Polyclonal
Isotype	IgG
Applications	ELISA, IHC, WB
Target	APX, APE1, APEX nuclease, APEN, Redox factor-1, APE-1, REF1, APEX, APE, Apurinic-apyrimidinic endonuclease 1, HAP1, AP endonuclease 1, APEX1, DNA-(apurinic or apyrimidinic site) endonuclease, REF-1
Purification	Purified by antigen affinity column.
Accession	P27695
Stability and Storage	Use a manual defrost freezer and avoid repeated freeze thaw cycles. Store at 2 to 8°C for frequent use. Store at -20 to -80°C for twelve months from the date of receipt.
Note	For research use only.

Data Image



Western Blot

Various lysates were subjected to SDS PAGE followed by western blot with APEX1 antibody (PHD74801) at 1 μ g/ml.

Lane 1: HepG2 cell lysate

Lane 2: Raji cell lysate

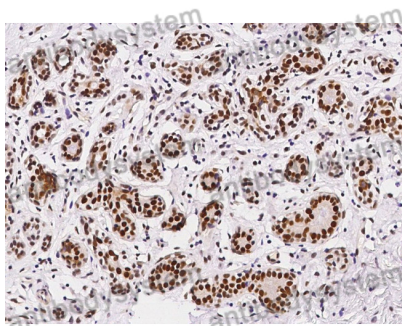
Lane 3: 293T cell lysate

Lane 4: Mouse spleen lysate

Second Ab: Goat Anti-Rabbit IgG H&L Polyclonal antibody, HRP (PTB96431) at 0.1 μ g/mL.

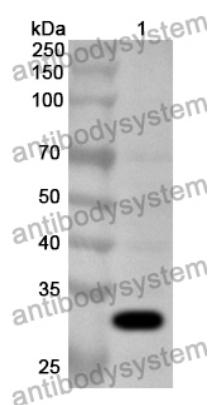
Predict MW: 36 kDa

Observed MW: 36 kDa



Immunohistochemical

Immunohistochemical analysis of human breast tissue stained for APEX1 with PHD74801.



Western Blot

Recombinant Protein lysates were subjected to SDS PAGE followed by western blot with APEX1 antibody (PHD74801) at 1 µg/ml.

Lane 1: Recombinant Protein

Second Ab: Goat Anti-Rabbit IgG H&L Polyclonal antibody, HRP (PTB96431) at 0.1 µg/mL.

Predict MW: 32 kDa

Observed MW: 32 kDa