

# Anti-Human YWHAE Polyclonal Antibody

## Summary

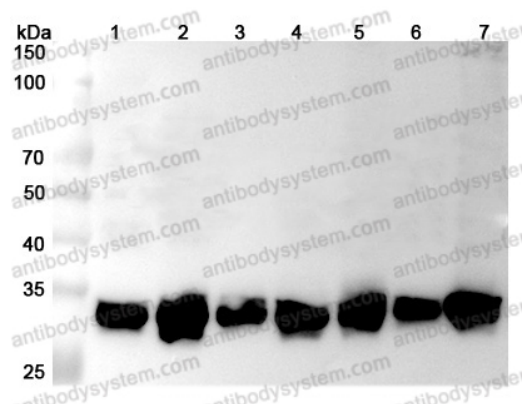
---

<b>Catalog No.</b>	PHF49301
<b>Host species</b>	Rabbit
<b>Tested applications</b>	ELISA: 1:4000-1:8000, IHC: 1:50-1:100, WB: 1:1000-1:4000
<b>Species reactivity</b>	Human
<b>Immunogen</b>	E. coli - derived recombinant Human YWHAE (Met1-Gln255).
<b>Form</b>	Liquid
<b>Storage buffer</b>	0.01M PBS, pH 7.4, 50% Glycerol, 0.05% Proclin 300.
<b>Clonality</b>	Polyclonal
<b>Isotype</b>	IgG
<b>Applications</b>	ELISA, IHC, WB
<b>Target</b>	14-3-3E, YWHAE, 14-3-3 protein epsilon
<b>Purification</b>	Purified by antigen affinity column.
<b>Accession</b>	P62258
<b>Stability and Storage</b>	Use a manual defrost freezer and avoid repeated freeze thaw cycles. Store at 2 to 8°C for frequent use. Store at -20 to -80°C for twelve months from the date of receipt.
<b>Note</b>	For research use only.

## Data Image

---

Various lysates were subjected to SDS PAGE followed by western blot with YWHAE antibody (PHF49301) at 1 $\mu$ g/ml.



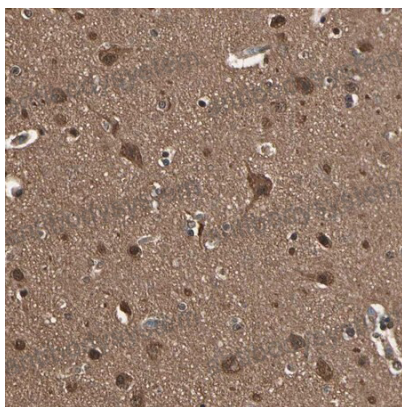
Western Blot

Lane 1: Hela cell lysate  
Lane 2: MCF-7 cell lysate  
Lane 3: Jurkat cell lysate  
Lane 4: NIH3T3 cell lysate  
Lane 5: RAW264.7 cell lysate  
Lane 6: A375 cell lysate  
Lane 7: 293T cell lysate

Second Ab: Goat Anti-Rabbit IgG H&L Polyclonal antibody, HRP (PTB96431) at 0.1  $\mu$ g/mL.

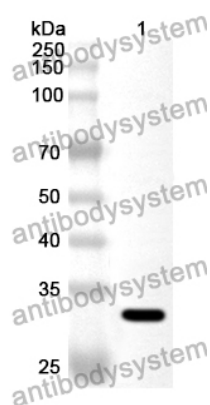
Predict MW: 29 kDa

Observed MW: 29 kDa



Immunohistochemical

Immunohistochemical analysis of human cerebral cortex tissue stained for YWHAE with PHF49301.



Western Blot

Recombinant Protein lysates were subjected to SDS PAGE followed by western blot with YWHAЕ antibody (PHF49301) at 1 µg/ml.

Lane 1: Recombinant Protein

Second Ab: Goat Anti-Rabbit IgG H&L Polyclonal antibody, HRP (PTB96431) at 0.1 µg/mL.

Predict MW: 31 kDa

Observed MW: 31 kDa