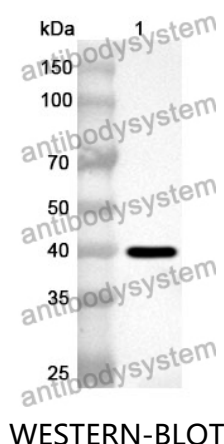


Anti-Human PDE4D Polyclonal Antibody

Summary

Catalog No.	PHG17001
Host species	Rabbit
Tested applications	ELISA: 1:4000-1:8000, IHC: 1:50-1:100, WB: 1:1000-1:4000
Species reactivity	Human
Immunogen	E. coli - derived recombinant Human PDE4D (Glu391-Thr711).
Form	Liquid
Storage buffer	0.01M PBS, pH 7.4, 50% Glycerol, 0.05% Proclin 300.
Clonality	Polyclonal
Isotype	IgG
Applications	ELISA, IHC, WB
Target	cAMP-specific 3',5'-cyclic phosphodiesterase 4D, PDE43, PDE4D, DPDE3
Purification	Purified by antigen affinity column.
Accession	Q08499
Stability and Storage	Use a manual defrost freezer and avoid repeated freeze thaw cycles. Store at 2 to 8°C for frequent use. Store at -20 to -80°C for twelve months from the date of receipt.
Note	For research use only.

Data Image



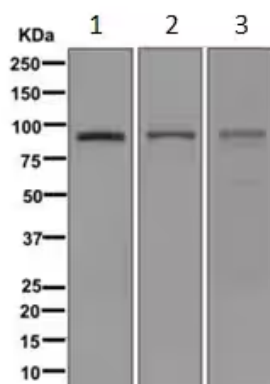
Recombinant Protein lysates were subjected to SDS PAGE followed by western blot with PDE4D antibody (PHG17001) at 1 µg/ml.

Lane 1: Recombinant protein

Second Ab: Goat Anti-Rabbit IgG H&L Polyclonal antibody, HRP (PTB96431) at 0.1 µg/mL.

Predict MW: 39 kDa

Observed MW: 39 kDa



Western Blot

Various lysates were subjected to SDS PAGE followed by western blot with PDE4D antibody (PHG17001) at 1 µg/ml.

Lane 1: Human heart

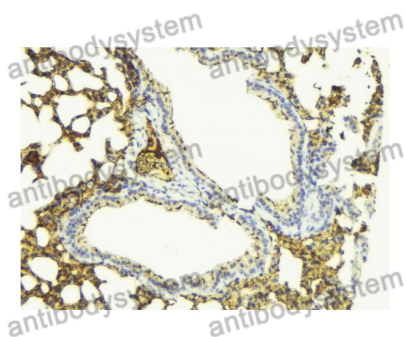
Lane 2: Human brain

Lane 3: K562

Second Ab: Goat Anti-Rabbit IgG H&L Polyclonal antibody, HRP (PTB96431) at 0.1 µg/mL.

Predict MW: 91 kDa

Observed MW: 91 kDa



Immunohistochemical

Immunohistochemical analysis of mouse lung stained for PDE4D with PHG17001.