

Anti-Human XRCC6 Polyclonal Antibody

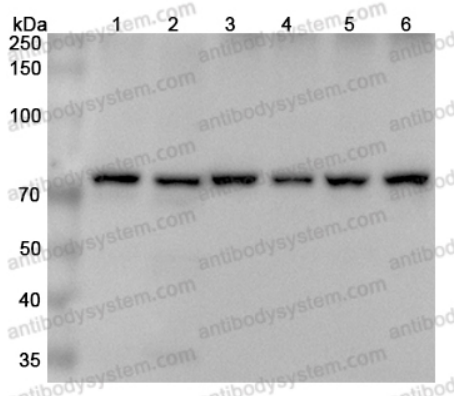
Summary

Catalog No.	PHC95901
Host species	Rabbit
Tested applications	ELISA: 1:4000-1:8000, IHC: 1:50-1:100, WB: 1:1000-1:4000
Species reactivity	Human
Immunogen	E. coli - derived recombinant Human XRCC6 (Asp36-Lys238).
Form	Liquid
Storage buffer	0.01M PBS, pH 7.4, 50% Glycerol, 0.05% Proclin 300.
Clonality	Polyclonal
Isotype	IgG
Applications	ELISA, IHC, WB
Target	Lupus Ku autoantigen protein p70, 5'-dRP lyase Ku70, Thyroid-lupus autoantigen, XRCC6, CTC box-binding factor 75 kDa subunit, X-ray repair complementing defective repair in Chinese hamster cells 6, G22P1, X-ray repair cross-complementing protein 6, ATP-dependent DNA helicase 2 subunit 1, DNA repair protein XRCC6, TLAA, ATP-dependent DNA helicase II 70 kDa subunit, CTCBF, 70 kDa subunit of Ku antigen, Ku70, 5'-deoxyribose-5-phosphate lyase Ku70, CTC75
Purification	Purified by antigen affinity column.
Accession	P12956
Stability and Storage	Use a manual defrost freezer and avoid repeated freeze thaw cycles. Store at 2 to 8°C for frequent use. Store at -20 to -80°C for twelve months from the date of receipt.

Note

For research use only.

Data Image

**Western Blot**

Various lysates were subjected to SDS PAGE followed by western blot with XRCC6 antibody (PHC95901) at 1µg/ml.

Lane 1: Hela cell lysate

Lane 2: Lncap cell lysate

Lane 3: HepG2 cell lysate

Lane 4: Jurkat cell lysate

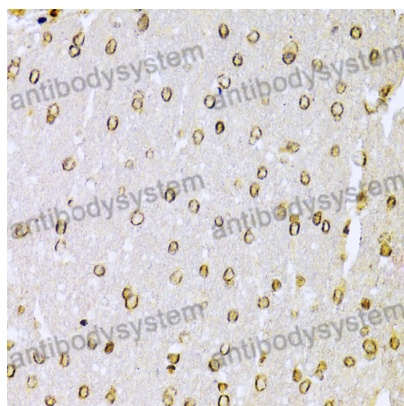
Lane 5: K562 cell lysate

Lane 6: 293T cell lysate

Second Ab: Goat Anti-Rabbit IgG H&L Polyclonal antibody, HRP (PTB96431) at 0.1 µg/mL.

Predict MW: 70 kDa

Observed MW: 75 kDa

**Immunohistochemical**

Immunohistochemical analysis of rat brain tissue stained for XRCC6 with PHC95901.



Western Blot

Recombinant Protein lysates were subjected to SDS PAGE followed by western blot with XRCC6 antibody (PHC95901) at 1 μ g/ml.

Lane 1: Recombinant Protein

Second Ab: Goat Anti-Rabbit IgG H&L Polyclonal antibody, HRP (PTB96431) at 0.1 μ g/mL.

Predict MW: 25 kDa

Observed MW: 25 kDa