

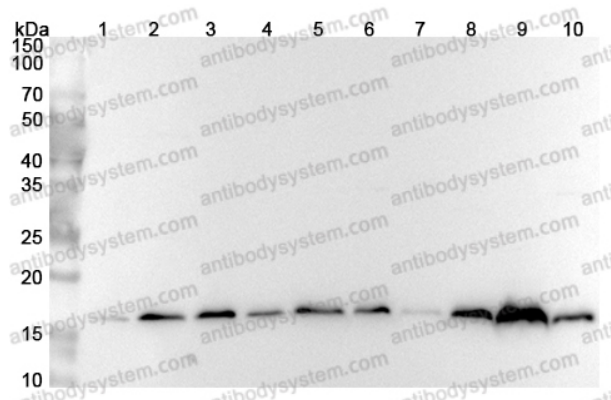
Anti-Human ARF1 Polyclonal Antibody

Summary

Catalog No.	PHF75701
Host species	Rabbit
Tested applications	ELISA: 1:4000-1:8000, IHC: 1:50-1:100, WB: 1:1000-1:4000
Species reactivity	Human
Immunogen	E. coli - derived recombinant Human ARF1 (Met1-Lys181).
Form	Liquid
Storage buffer	0.01M PBS, pH 7.4, 50% Glycerol, 0.05% Proclin 300.
Clonality	Polyclonal
Isotype	IgG
Applications	ELISA, IHC, WB
Target	ADP-ribosylation factor 1, ARF1
Purification	Purified by antigen affinity column.
Accession	P84077
Stability and Storage	Use a manual defrost freezer and avoid repeated freeze thaw cycles. Store at 2 to 8°C for frequent use. Store at -20 to -80°C for twelve months from the date of receipt.
Note	For research use only.

Data Image

Various lysates were subjected to SDS PAGE followed by western blot with ARF1 antibody (PHF75701) at 1 μ g/ml.



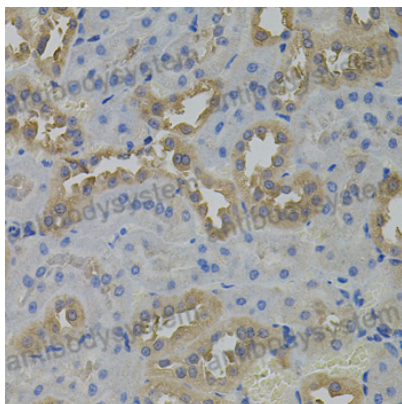
Western Blot

Lane 1: Hela cell lysate
Lane 2: SKOV3 cell lysate
Lane 3: DU145 cell lysate
Lane 4: HepG2 cell lysate
Lane 5: Lncap cell lysate
Lane 6: 293T cell lysate
Lane 7: Mouse brain lysate
Lane 8: Mouse spleen lysate
Lane 9: Mouse lung lysate
Lane 10: Rat brain lysate

Second Ab: Goat Anti-Rabbit IgG H&L Polyclonal antibody, HRP (PTB96431) at 0.1 μ g/mL.

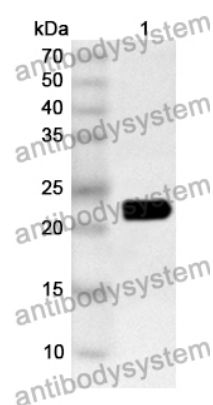
Predict MW: 21 kDa

Observed MW: 17 kDa



Immunohistochemical

Immunohistochemical analysis of rat kidney stained for ARF1 with PHF75701.



Western Blot

Recombinant Protein lysates were subjected to SDS PAGE followed by western blot with ARF1 antibody (PHF75701) at 1 μ g/ml.

Lane 1: Recombinant Protein

Second Ab: Goat Anti-Rabbit IgG H&L Polyclonal antibody, HRP (PTB96431) at 0.1 μ g/mL.

Predict MW: 23 kDa

Observed MW: 23 kDa