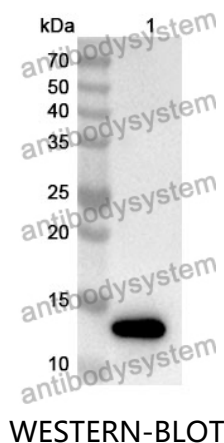


Anti-Human COX7A2L Polyclonal Antibody

Summary

Catalog No.	PHA22101
Host species	Rabbit
Tested applications	ELISA: 1:4000-1:8000, IHC: 1:50-1:100, WB: 1:1000-1:4000
Species reactivity	Human
Immunogen	E. coli - derived recombinant Human COX7A2L (Met1-Lys114).
Form	Liquid
Storage buffer	0.01M PBS, pH 7.4, 50% Glycerol, 0.05% Proclin 300.
Clonality	Polyclonal
Isotype	IgG
Applications	ELISA, IHC, WB
Target	EB1, COX7RP, Cytochrome c oxidase subunit 7A-related protein, mitochondrial, COX7A2L, COX7a-related protein, Cytochrome c oxidase subunit VIIa-related protein, COX7AR
Purification	Purified by antigen affinity column.
Accession	O14548
Stability and Storage	Use a manual defrost freezer and avoid repeated freeze thaw cycles. Store at 2 to 8°C for frequent use. Store at -20 to -80°C for twelve months from the date of receipt.
Note	For research use only.

Data Image



Recombinant Protein lysates were subjected to SDS PAGE followed by western blot with COX7A2L antibody (PHA22101) at 1 μ g/ml.

Lane 1: Recombinant protein

Second Ab: Goat Anti-Rabbit IgG H&L Polyclonal antibody, HRP (PTB96431) at 0.1 μ g/mL.

Predict MW: 15 kDa

Observed MW: 15 kDa

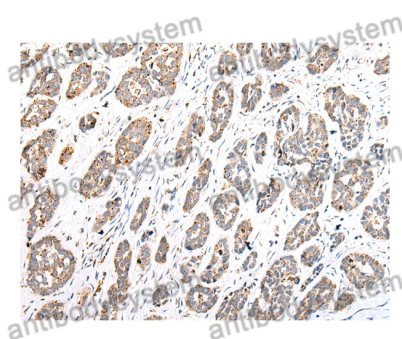
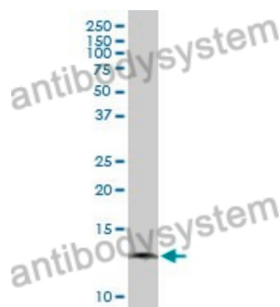
Various lysates were subjected to SDS PAGE followed by western blot with COX7A2L antibody (PHA22101) at 1 μ g/ml.

Lane 1: HepG2

Second Ab: Goat Anti-Rabbit IgG H&L Polyclonal antibody, HRP (PTB96431) at 0.1 μ g/mL.

Predict MW: 13 kDa

Observed MW: 13 kDa



Immunohistochemical analysis of human esophagus cancer stained for COX7A2L with PHA22101.

Immunohistochemical