

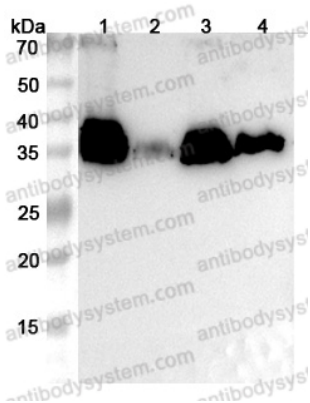
Anti-Penaeus monodon TM1/Tropomyosin

Polyclonal Antibody

Summary

Catalog No.	PWK53001
Host species	Rabbit
Tested applications	ELISA: 1:4000-1:8000, IHC: 1:50-1:100, WB: 1:1000-1:4000
Species reactivity	Penaeus monodon (Giant tiger prawn)
Immunogen	E. coli - derived recombinant Penaeus monodon TM1/Tropomyosin (Met1-Tyr284).
Form	Liquid
Storage buffer	0.01M PBS, pH 7.4, 50% Glycerol, 0.05% Proclin 300.
Clonality	Polyclonal
Isotype	IgG
Applications	ELISA, IHC, WB
Target	Tropomyosin, Major allergen Pen m 1, Tropomyosin, fast isoform, Tm-Penm-fast, Pen m 1.0101, TM1
Purification	Purified by antigen affinity column.
Accession	A1KYZ2
Stability and Storage	Use a manual defrost freezer and avoid repeated freeze thaw cycles. Store at 2 to 8°C for frequent use. Store at -20 to -80°C for twelve months from the date of receipt.
Note	For research use only.

Data Image



Western Blot

Various lysates were subjected to SDS PAGE followed by western blot with penl1 antibody (PWK53001) at 1 μ g/ml.

Lane 1: Mouse skeletal muscle lysate

Lane 2: Mouse heart lysate

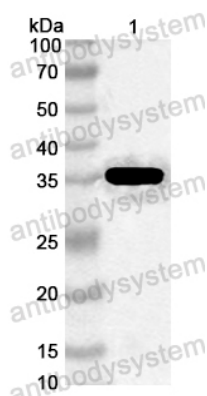
Lane 3: Rat skeletal muscle lysate

Lane 4: Rat heart lysate

Second Ab: Goat Anti-Rabbit IgG H&L Polyclonal antibody, HRP (PTB96431) at 0.1 μ g/mL.

Predict MW: 33 kDa

Observed MW: 33 kDa



Western Blot

Recombinant Protein lysates were subjected to SDS PAGE followed by western blot with TM1/Tropomyosin antibody (PWK53001) at 1 μ g/ml.

Lane 1: Recombinant Protein

Second Ab: Goat Anti-Rabbit IgG H&L Polyclonal antibody, HRP (PTB96431) at 0.1 μ g/mL.

Predict MW: Penaeus monodon

Observed MW: