

Anti-Human PMEL Polyclonal Antibody

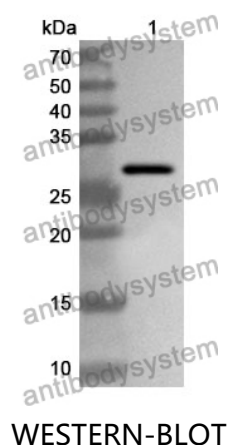
Summary

Catalog No.	PHE28701
Host species	Rabbit
Tested applications	ELISA: 1:4000-1:8000, IHC: 1:50-1:100, WB: 1:1000-1:4000
Species reactivity	Human
Immunogen	E. coli - derived recombinant Human PMEL (Gln65-Thr299).
Form	Liquid
Storage buffer	0.01M PBS, pH 7.4, 50% Glycerol, 0.05% Proclin 300.
Clonality	Polyclonal
Isotype	IgG
Applications	ELISA, IHC, WB
Target	ME20M, Melanocyte protein PMEL, Silver locus protein homolog, Secreted melanoma-associated ME20 antigen, D12S53E, 95 kDa melanocyte-specific secreted glycoprotein, SILV, P100, Premelanosome protein, PMEL17, ME20S, PMEL, ME20-S, ME20-M, P26, P1, Melanocytes lineage-specific antigen GP100, Melanocyte protein Pmel 17, Melanoma-associated ME20 antigen
Purification	Purified by antigen affinity column.
Accession	P40967
Stability and Storage	Use a manual defrost freezer and avoid repeated freeze thaw cycles. Store at 2 to 8°C for frequent use. Store at -20 to -80°C for twelve months from the date of receipt.

Note

For research use only.

Data Image



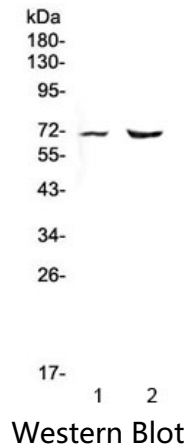
Recombinant Protein lysates were subjected to SDS PAGE followed by western blot with PMEL antibody (PHE28701) at 1 µg/ml.

Lane 1: Recombinant protein

Second Ab: Goat Anti-Rabbit IgG H&L Polyclonal antibody, HRP (PTB96431) at 0.1 µg/mL.

Predict MW: 28 kDa

Observed MW: 28 kDa



Various lysates were subjected to SDS PAGE followed by western blot with PMEL antibody (PHE28701) at 1 µg/ml.

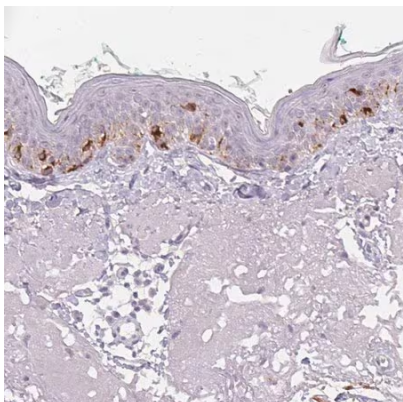
Lane 1: Rat heart

Lane 2: Mouse heart

Second Ab: Goat Anti-Rabbit IgG H&L Polyclonal antibody, HRP (PTB96431) at 0.1 µg/mL.

Predict MW: 70 kDa

Observed MW: 70 kDa



Immunohistochemical

Immunohistochemical analysis of human skin tissue stained for PMEL with PHE28701.