

# Anti-Human CHCHD3 Polyclonal Antibody

## Summary

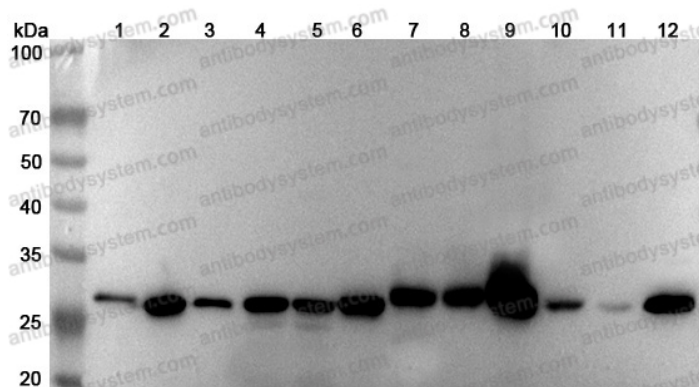
---

<b>Catalog No.</b>	PHK40901
<b>Host species</b>	Rabbit
<b>Tested applications</b>	ELISA: 1:4000-1:8000, IHC: 1:50-1:100, WB: 1:1000-1:4000
<b>Species reactivity</b>	Human
<b>Immunogen</b>	E. coli - derived recombinant Human CHCHD3 (Ser58-Gly227).
<b>Form</b>	Liquid
<b>Storage buffer</b>	0.01M PBS, pH 7.4, 50% Glycerol, 0.05% Proclin 300.
<b>Clonality</b>	Polyclonal
<b>Isotype</b>	IgG
<b>Applications</b>	ELISA, IHC, WB
<b>Target</b>	MICOS complex subunit MIC19, Coiled-coil-helix-coiled-coil-helix domain-containing protein 3, MINOS3, MIC19, CHCHD3
<b>Purification</b>	Purified by antigen affinity column.
<b>Accession</b>	Q9NX63
<b>Stability and Storage</b>	Use a manual defrost freezer and avoid repeated freeze thaw cycles. Store at 2 to 8°C for frequent use. Store at -20 to -80°C for twelve months from the date of receipt.
<b>Note</b>	For research use only.

## Data Image

---

Various lysates were subjected to SDS PAGE followed by western blot with CHCHD3 antibody (PHK40901) at 1µg/ml.



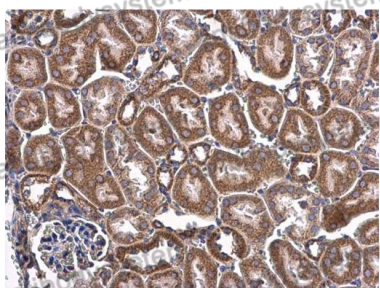
Western Blot

Lane 1: NIH3T3 cell lysate  
 Lane 2: Hela cell lysate  
 Lane 3: Jurkat cell lysate  
 Lane 4: Hepg2 cell lysate  
 Lane 5: A549 cell lysate  
 Lane 6: 293T cell lysate  
 Lane 7: Mouse kidney lysate  
 Lane 8: Mouse liver lysate  
 Lane 9: Mouse heart lysate  
 Lane 10: Rat kidney lysate  
 Lane 11: Rat Liver lysate  
 Lane 12: Rat heart lysate

Second Ab: Goat Anti-Rabbit IgG H&L Polyclonal antibody, HRP (PTB96431) at 0.1 µg/mL.

Predict MW: 26 kDa

Observed MW: 26 kDa



Immunohistochemical

Immunohistochemical analysis of mouse kidney stained for CHCHD3 with PHK40901.



Western Blot

Recombinant Protein lysates were subjected to SDS PAGE followed by western blot with CHCHD3 antibody (PHK40901) at 1  $\mu$ g/ml.

Lane 1: Recombinant Protein

Second Ab: Goat Anti-Rabbit IgG H&L Polyclonal antibody, HRP (PTB96431) at 0.1  $\mu$ g/mL.

Predict MW: 22 kDa

Observed MW: 22 kDa