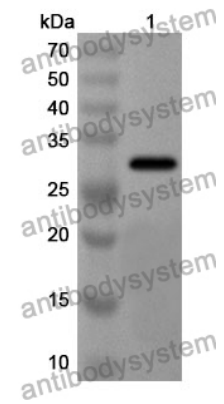


Anti-Human PHLPP1 Polyclonal Antibody

Summary

Catalog No.	PHA89101
Host species	Rabbit
Tested applications	ELISA: 1:4000-1:8000, IHC: 1:50-1:100, WB: 1:1000-1:4000
Species reactivity	Human
Immunogen	E. coli - derived recombinant Human PHLPP1 (Ser1168-Thr1425).
Form	Liquid
Storage buffer	0.01M PBS, pH 7.4, 50% Glycerol, 0.05% Proclin 300.
Clonality	Polyclonal
Isotype	IgG
Applications	ELISA, IHC, WB
Target	KIAA0606, Pleckstrin homology domain-containing family E member 1, hSCOP, PHLPP, SCOP, PHLPP1, PH domain leucine-rich repeat-containing protein phosphatase 1, PLEKHE1, Suprachiasmatic nucleus circadian oscillatory protein, PH domain-containing family E member 1
Purification	Purified by antigen affinity column.
Accession	O60346
Stability and Storage	Use a manual defrost freezer and avoid repeated freeze thaw cycles. Store at 2 to 8°C for frequent use. Store at -20 to -80°C for twelve months from the date of receipt.
Note	For research use only.

Data Image



WESTERN-BLOT

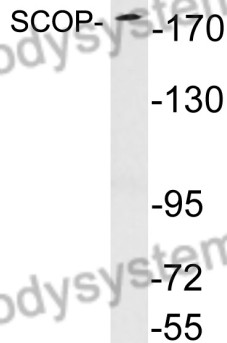
Recombinant Protein lysates were subjected to SDS PAGE followed by western blot with PHLPP1 antibody (PHA89101) at 1 μ g/ml.

Lane 1: Recombinant protein

Second Ab: Goat Anti-Rabbit IgG H&L Polyclonal antibody, HRP (PTB96431) at 0.1 μ g/mL.

Predict MW: 30 kDa

Observed MW: 30 kDa



Western Blot

Various lysates were subjected to SDS PAGE followed by western blot with PHLPP1 antibody (PHA89101) at 1 μ g/ml.

Lane 1: Y79

Second Ab: Goat Anti-Rabbit IgG H&L Polyclonal antibody, HRP (PTB96431) at 0.1 μ g/mL.

Predict MW: 185 kDa

Observed MW: 185 kDa



Immunohistochemical

Immunohistochemical analysis of human brain stained for PHLPP1 with PHA89101.