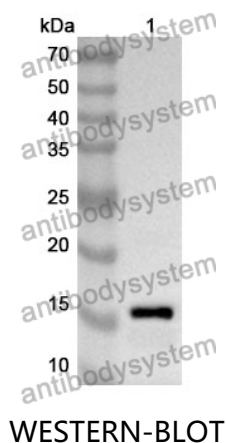


Anti-Human TUT4 Polyclonal Antibody

Summary

Catalog No.	PHK40501
Host species	Rabbit
Tested applications	ELISA: 1:4000-1:8000, IHC: 1:50-1:100, WB: 1:1000-1:4000
Species reactivity	Human
Immunogen	E. coli - derived recombinant Human TUT4 (Glu246-Asp370).
Form	Liquid
Storage buffer	0.01M PBS, pH 7.4, 50% Glycerol, 0.05% Proclin 300.
Clonality	Polyclonal
Isotype	IgG
Applications	ELISA, IHC, WB
Target	TUTase 4, KIAA0191, TUT4, ZCCHC11, Terminal uridylyltransferase 4, Zinc finger CCHC domain-containing protein 11
Purification	Purified by antigen affinity column.
Accession	Q5TAX3
Stability and Storage	Use a manual defrost freezer and avoid repeated freeze thaw cycles. Store at 2 to 8°C for frequent use. Store at -20 to -80°C for twelve months from the date of receipt.
Note	For research use only.

Data Image



Recombinant Protein lysates were subjected to SDS PAGE followed by western blot with TUT4 antibody (PHK40501) at 1 µg/ml.

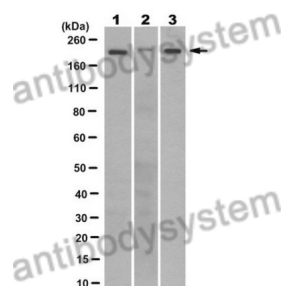
Lane 1: Recombinant protein

Second Ab: Goat Anti-Rabbit IgG H&L Polyclonal antibody, HRP (PTB96431) at 0.1 µg/mL.

Predict MW: 17 kDa

Observed MW: 17 kDa

Various lysates were subjected to SDS PAGE followed by western blot with TUT4 antibody (PHK40501) at 1 µg/ml.



Western Blot

Lane 1: PC3

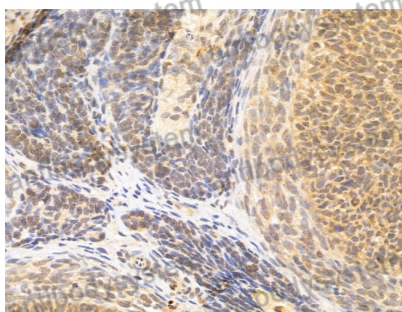
Lane 2: Jurkat

Lane 3: C2C12

Second Ab: Goat Anti-Rabbit IgG H&L Polyclonal antibody, HRP (PTB96431) at 0.1 µg/mL.

Predict MW: 185 kDa

Observed MW: 185 kDa



Immunohistochemical

Immunohistochemical analysis of rat ovary stained for TUT4 with PHK40501.