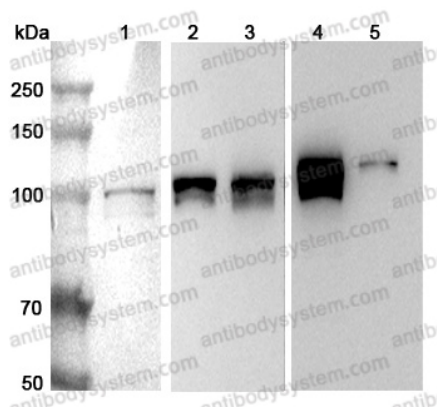


Anti-Human RBM15 Polyclonal Antibody

Summary

Catalog No.	PHK40301
Host species	Rabbit
Tested applications	ELISA: 1:4000-1:8000, IHC: 1:50-1:100, WB: 1:1000-1:4000
Species reactivity	Human
Immunogen	E. coli - derived recombinant Human RBM15 (Thr386-Thr529).
Form	Liquid
Storage buffer	0.01M PBS, pH 7.4, 50% Glycerol, 0.05% Proclin 300.
Clonality	Polyclonal
Isotype	IgG
Applications	ELISA, IHC, WB
Target	RBM15, RNA-binding motif protein 15, OTT1, One-twenty two protein 1, OTT, RNA-binding protein 15
Purification	Purified by antigen affinity column.
Accession	Q96T37
Stability and Storage	Use a manual defrost freezer and avoid repeated freeze thaw cycles. Store at 2 to 8°C for frequent use. Store at -20 to -80°C for twelve months from the date of receipt.
Note	For research use only.

Data Image



Western Blot

Various lysates were subjected to SDS PAGE followed by western blot with RBM15 antibody (PHK40301) at 1 μ g/ml.

Lane 1: NIH3T3 cell lysate

Lane 2: K562 cell lysate

Lane 3: Hela cell lysate

Lane 4: 293T cell lysate

Lane 5: Jurkat cell lysate

Second Ab: Goat Anti-Rabbit IgG H&L Polyclonal antibody, HRP (PTB96431) at 0.1 μ g/mL.

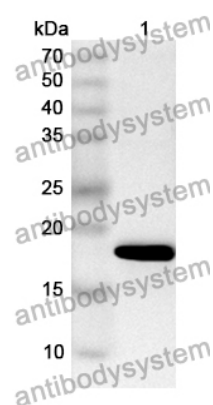
Predict MW: 108 kDa

Observed MW: 108 kDa



Immunohistochemical

Immunohistochemical analysis of rat liver stained for RBM15 with PHK40301.



Western Blot

Recombinant Protein lysates were subjected to SDS PAGE followed by western blot with RBM15 antibody (PHK40301) at 1 μ g/ml.

Lane 1: Recombinant Protein

Second Ab: Goat Anti-Rabbit IgG H&L Polyclonal antibody, HRP (PTB96431) at 0.1 μ g/mL.

Predict MW: 19 kDa

Observed MW: 19 kDa