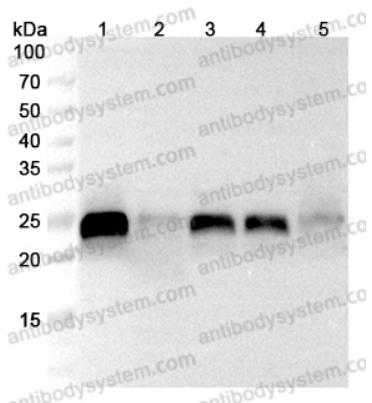


Anti-Human PRDX1 Polyclonal Antibody

Summary

Catalog No.	PHG10501
Host species	Rabbit
Tested applications	ELISA: 1:4000-1:8000, IHC: 1:50-1:100, WB: 1:1000-1:4000
Species reactivity	Human
Immunogen	E. coli - derived recombinant Human PRDX1 (Lys16-Lys199).
Form	Liquid
Storage buffer	0.01M PBS, pH 7.4, 50% Glycerol, 0.05% Proclin 300.
Clonality	Polyclonal
Isotype	IgG
Applications	ELISA, IHC, WB
Target	Thioredoxin-dependent peroxide reductase 2, PAGB, Thioredoxin peroxidase 2, Proliferation-associated gene protein, Thioredoxin-dependent peroxiredoxin 1, PAG, PAGA, Peroxiredoxin-1, Natural killer cell-enhancing factor A, TDPX2, NKEF-A, PRDX1
Purification	Purified by antigen affinity column.
Accession	Q06830
Stability and Storage	Use a manual defrost freezer and avoid repeated freeze thaw cycles. Store at 2 to 8°C for frequent use. Store at -20 to -80°C for twelve months from the date of receipt.
Note	For research use only.

Data Image



Western Blot

Various lysates were subjected to SDS PAGE followed by western blot with PRDX1 antibody (PHG10501) at 1 μ g/ml.

Lane 1: HepG2 cell lysate

Lane 2: A549 cell lysate

Lane 3: MCF7 cell lysate

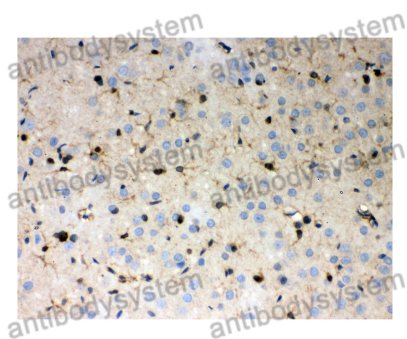
Lane 4: Jurkat cell lysate

Lane 5: Mouse kidney lysate

Second Ab: Goat Anti-Rabbit IgG H&L Polyclonal antibody, HRP (PTB96431) at 0.1 μ g/mL.

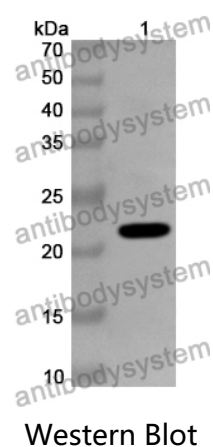
Predict MW: 23 kDa

Observed MW: 23 kDa



Immunohistochemical

Immunohistochemical analysis of Rat Brain stained for PRDX1 with PHG10501.



Recombinant Protein lysates were subjected to SDS PAGE followed by western blot with PRDX1 antibody (PHG10501) at 1 µg/ml.

Lane 1: Recombinant Protein

Second Ab: Goat Anti-Rabbit IgG H&L Polyclonal antibody, HRP (PTB96431) at 0.1 µg/mL.

Predict MW: 23 kDa

Observed MW: 23 kDa