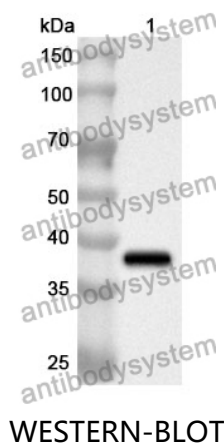


Anti-Human FXYD1 Polyclonal Antibody

Summary

Catalog No.	PHA03801
Host species	Rabbit
Tested applications	ELISA: 1:4000-1:8000, IHC: 1:50-1:100, WB: 1:1000-1:4000
Species reactivity	Human
Immunogen	E. coli - derived recombinant Human FXYD1 (Glu21-Arg92).
Form	Liquid
Storage buffer	0.01M PBS, pH 7.4, 50% Glycerol, 0.05% Proclin 300.
Clonality	Polyclonal
Isotype	IgG
Applications	ELISA, IHC, WB
Target	Sodium/potassium-transporting ATPase subunit FXYD1, PLM, FXYD1, Phospholemman, FXYD domain-containing ion transport regulator 1
Purification	Purified by antigen affinity column.
Accession	O00168
Stability and Storage	Use a manual defrost freezer and avoid repeated freeze thaw cycles. Store at 2 to 8°C for frequent use. Store at -20 to -80°C for twelve months from the date of receipt.
Note	For research use only.

Data Image



Recombinant Protein lysates were subjected to SDS PAGE followed by western blot with FXYD1 antibody (PHA03801) at 1 μ g/ml.

Lane 1: Recombinant protein

Second Ab: Goat Anti-Rabbit IgG H&L Polyclonal antibody, HRP (PTB96431) at 0.1 μ g/mL.

Predict MW: 37 kDa

Observed MW: 37 kDa

Various lysates were subjected to SDS PAGE followed by western blot with FXYD1 antibody (PHA03801) at 1 μ g/ml.



Lane 1: Rat liver

Lane 2: Rat cardiac muscle

Lane 3: Mouse cardiac muscle

Lane 4: HepG2

Lane 5: Hela

Second Ab: Goat Anti-Rabbit IgG H&L Polyclonal antibody, HRP (PTB96431) at 0.1 μ g/mL.

Predict MW: 10 kDa

Observed MW: 10 kDa



Immunohistochemical analysis of mouse heart
stained for FXYD1 with PHA03801.

Immunohistochemical