

Anti-Streptococcus pyogenes speB/Streptopain Polyclonal Antibody

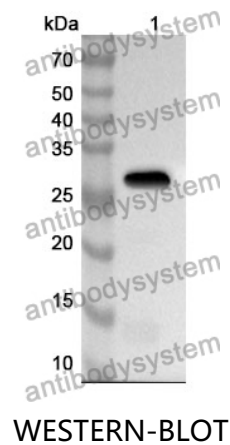
Summary

Catalog No.	PXX09201
Host species	Rabbit
Tested applications	ELISA: 1:4000-1:8000, WB: 1:500-1:4000
Species reactivity	Streptococcus pyogenes
Immunogen	E. coli - derived recombinant Streptococcus pyogenes speB/Streptopain (Gln146-Pro398).
Form	Liquid
Storage buffer	0.01M PBS, pH 7.4, 50% Glycerol, 0.05% Proclin 300.
Concentration	0.23 mg/ml
Clonality	Polyclonal
Isotype	IgG
Applications	ELISA, IHC, WB
Target	Streptopain, 3.4.22.10, Exotoxin type B, SPE B, Streptococcal cysteine proteinase, Streptococcus peptidase A, SPP, speB
Purification	Purified by antigen affinity column.
Accession	P0C0J0
Stability and Storage	Use a manual defrost freezer and avoid repeated freeze thaw cycles. Store at 2 to 8°C for frequent use. Store at -20 to -80°C for twelve months from the date of receipt.

Note

For research use only.

Data Image



Recombinant Protein lysates were subjected to SDS PAGE followed by western blot with speB/Streptopain antibody (PXX09201) at 1 µg/ml.

Lane 1: Recombinant protein

Second Ab: Goat Anti-Rabbit IgG H&L Polyclonal antibody, HRP (PTB96431) at 0.1 µg/mL.

Predict MW: 30 kDa

Observed MW: 30 kDa