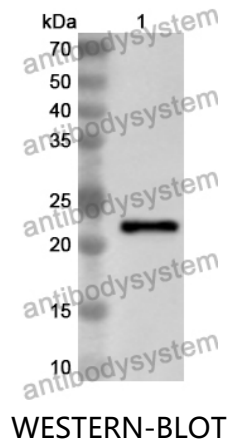


Anti-Human CHMP2A Polyclonal Antibody

Summary

Catalog No.	PHA73201
Host species	Rabbit
Tested applications	ELISA: 1:4000-1:8000, IHC: 1:50-1:100, WB: 1:1000-1:4000
Species reactivity	Human
Immunogen	E. coli - derived recombinant Human CHMP2A (Pro11-Asn181).
Form	Liquid
Storage buffer	0.01M PBS, pH 7.4, 50% Glycerol, 0.05% Proclin 300.
Clonality	Polyclonal
Isotype	IgG
Applications	ELISA, IHC, WB
Target	Vps2-1, Putative breast adenocarcinoma marker BC-2, CHMP2A, hVps2-1, CHMP2a, Vacuolar protein sorting-associated protein 2-1, Charged multivesicular body protein 2a, CHMP2, BC2, Chromatin-modifying protein 2a
Purification	Purified by antigen affinity column.
Accession	O43633
Stability and Storage	Use a manual defrost freezer and avoid repeated freeze thaw cycles. Store at 2 to 8°C for frequent use. Store at -20 to -80°C for twelve months from the date of receipt.
Note	For research use only.

Data Image



Recombinant Protein lysates were subjected to SDS PAGE followed by western blot with CHMP2A antibody (PHA73201) at 1 $\mu\text{g/ml}$.

Lane 1: Recombinant protein

Second Ab: Goat Anti-Rabbit IgG H&L Polyclonal antibody, HRP (PTB96431) at 0.1 $\mu\text{g/mL}$.

Predict MW: 22 kDa

Observed MW: 22 kDa