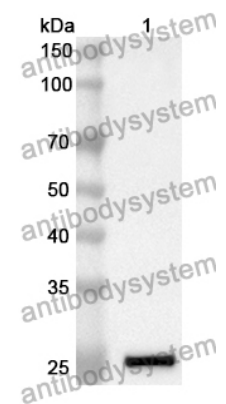


Anti-Lassa virus/LASV GPC Polyclonal Antibody

Summary

Catalog No.	PVV04301
Host species	Rabbit
Tested applications	ELISA: 1:4000-1:8000, IHC: 1:50-1:200, WB: 1:500-1:4000
Species reactivity	Lassa virus (strain Mouse/Sierra Leone/Josiah/1976) (LASV)
Immunogen	E. coli - derived recombinant Lassa virus/LASV GPC (Thr59-Leu259).
Form	Liquid
Storage buffer	0.01M PBS, pH 7.4, 50% Glycerol, 0.05% Proclin 300.
Concentration	0.84 mg/ml
Clonality	Polyclonal
Isotype	IgG
Applications	ELISA, IHC, WB
Target	Pre-glycoprotein polyprotein GP complex, Pre-GP-C, Stable signal peptide, SSP, Glycoprotein G1, GP1, Glycoprotein G2, GP2, GPC, GP-C
Purification	Purified by antigen affinity column.
Accession	P08669
Stability and Storage	Use a manual defrost freezer and avoid repeated freeze thaw cycles. Store at 2 to 8°C for frequent use. Store at -20 to -80°C for twelve months from the date of receipt.
Note	For research use only.

Data Image



Recombinant Protein lysates were subjected to SDS PAGE followed by western blot with GPC antibody (PVV04301) at 1 µg/ml.

Lane 1: Recombinant protein

Second Ab: Goat Anti-Rabbit IgG H&L Polyclonal antibody, HRP (PTB96431) at 0.1 µg/mL.

Predict MW: 25 kDa

Observed MW: 25 kDa