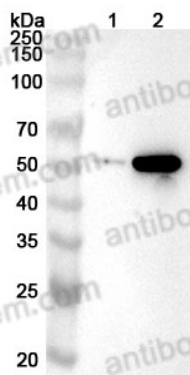


Anti-INHBB Polyclonal Antibody

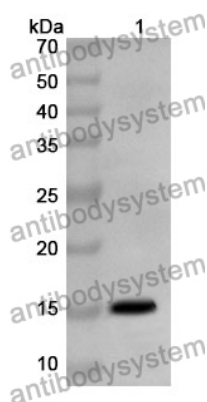
Summary

Catalog No.	PHC41501
Host species	Rabbit
Tested applications	ELISA: 1:4000-1:8000, IHC: 1:50-1:100, WB: 1:1000-1:4000
Species reactivity	Human, Mouse, Rat
Immunogen	E. coli - derived recombinant Human INHBB (Gly293-Ala407).
Form	Liquid
Storage buffer	0.01M PBS, pH 7.4, 50% Glycerol, 0.05% Proclin 300.
Clonality	Polyclonal
Isotype	IgG
Applications	ELISA, IHC, WB
Target	Inhibin beta B chain,INHBB,Activin beta-B chain
Purification	Purified by antigen affinity column.
Accession	P09529
Stability and Storage	Use a manual defrost freezer and avoid repeated freeze thaw cycles. Store at 2 to 8°C for frequent use. Store at -20 to -80°C for twelve months from the date of receipt.
Note	For research use only.

Data Image



WESTERN BLOT



WESTERN BLOT

Various lysates were subjected to SDS PAGE followed by western blot with INHBB antibody (PHC41501) at 1ug/mL .

Lane 1: A431 cell lysate

Lane 2: A549 cell lysate

Second Ab: Goat Anti-Rabbit IgG H&L Polyclonal antibody, HRP (PTB96431) at 0.1 µg/mL.

Predict MW: 45 kDa

Observed MW: 52 kDa

Recombinant Protein lysates were subjected to SDS PAGE followed by western blot with INHBB antibody (PHC41501) at 1 µg/ml.

Lane 1: Recombinant protein

Second Ab: Goat Anti-Rabbit IgG H&L Polyclonal antibody, HRP (PTB96431) at 0.1 µg/mL.

Predict MW: 15 kDa

Observed MW: 15 kDa