

Recombinant Human ATP2A1 Protein, N-His

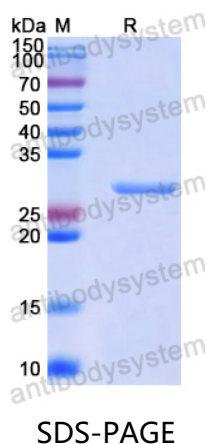
Summary

Catalog No.	YHA37301
Alternative Names	ATP2A1, Calcium pump 1, Sarcoplasmic/endoplasmic reticulum calcium ATPase 1, Calcium-transporting ATPase sarcoplasmic reticulum type, fast twitch skeletal muscle isoform, SERCA1, Endoplasmic reticulum class 1/2 Ca(2+) ATPase, SR Ca(2+)-ATPase 1
Form	Lyophilized
Storage buffer	Lyophilized from a solution in PBS pH 7.4, 0.02% NLS, 1mM EDTA, 4% Trehalose, 1% Mannitol.
Purity	>90% as determined by SDS-PAGE.
Applications	ELISA, Immunogen, SDS-PAGE, WB, Bioactivity testing in progress
Endotoxin level	Please contact with the lab for this information.
Expression system	E. coli
Accession	O14983
Protein length	Thr357-Leu600
Nature	Recombinant
Predicted molecular weight	29.29 kDa
Stability and Storage	Use a manual defrost freezer and avoid repeated freeze thaw cycles. Store at 2 to 8°C for frequent use. Store at -20 to -80°C for twelve months from the date of receipt.
Reconstitution	Reconstitute in sterile water for a stock solution. A copy of datasheet will be provided with the products, please refer to it for details.

Recombinant Proteins & Antibodies

Species	Homo sapiens (Human)
Shipping	In general, proteins are provided as lyophilized powder/frozen liquid. They are shipped out with dry ice/blue ice unless customers require otherwise.
Note	For research use only.

Data Image



SDS PAGE for Recombinant Human ATP2A1 Protein