

# Recombinant Human ZFP36L1 Protein, N-His-SUMO

## Summary

---

<b>Catalog No.</b>	YHG12201
<b>Alternative Names</b>	ERF-1, ZFP36-like 1, TIS11B, BRF1, ZFP36L1, Butyrate response factor 1, Zinc finger protein 36, C3H1 type-like 1, ERF1, RNF162B, BERG36, TPA-induced sequence 11b, mRNA decay activator protein ZFP36L1, EGF-response factor 1
<b>Form</b>	Lyophilized
<b>Storage buffer</b>	Lyophilized from a solution in PBS pH 7.4, 0.02% NLS, 1mM EDTA, 4% Trehalose, 1% Mannitol.
<b>Purity</b>	>90% as determined by SDS-PAGE.
<b>Applications</b>	ELISA, Immunogen, SDS-PAGE, WB, Bioactivity testing in progress
<b>Endotoxin level</b>	Please contact with the lab for this information.
<b>Expression system</b>	E. coli
<b>Accession</b>	Q07352
<b>Protein length</b>	Arg121-Arg195
<b>Nature</b>	Recombinant
<b>Predicted molecular weight</b>	21.03 kDa
<b>Stability and Storage</b>	Use a manual defrost freezer and avoid repeated freeze thaw cycles. Store at 2 to 8°C for frequent use. Store at -20 to -80°C for twelve months from the date of receipt.
<b>Reconstitution</b>	Reconstitute in sterile water for a stock solution. A copy of datasheet will be provided with the products, please refer to it for details.

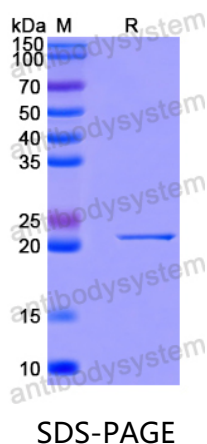
---

Recombinant Proteins & Antibodies

<b>Species</b>	Homo sapiens (Human)
<b>Shipping</b>	In general, proteins are provided as lyophilized powder/frozen liquid. They are shipped out with dry ice/blue ice unless customers require otherwise.
<b>Note</b>	For research use only.

## Data Image

---



SDS PAGE for Recombinant Human ZFP36L1 Protein