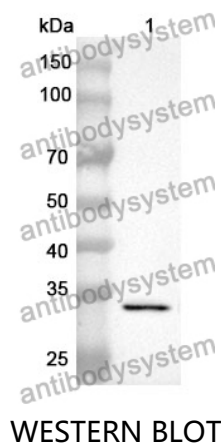


Anti-CYP21A2 Polyclonal Antibody

Summary

Catalog No.	PHC35501
Host species	Rabbit
Tested applications	ELISA: 1:4000-1:8000, IHC: 1:50-1:100, WB: 1:1000-1:4000
Species reactivity	Human
Immunogen	E. coli - derived recombinant Human CYP21A2 (Leu107-Gly390).
Form	Liquid
Storage buffer	0.01M PBS, pH 7.4, 50% Glycerol, 0.05% Proclin 300.
Clonality	Polyclonal
Isotype	IgG
Applications	ELISA, IHC, WB
Target	CYP21,CYP21B,Cytochrome P450 21,Cytochrome P450-C21B,Cytochrome P450-C21,Cytochrome P450 XXI,21-OHase,Steroid 21-hydroxylase,Cytochrome P-450c21,CYP21A2
Purification	Purified by antigen affinity column.
Accession	P08686
Stability and Storage	Use a manual defrost freezer and avoid repeated freeze thaw cycles. Store at 2 to 8°C for frequent use. Store at -20 to -80°C for twelve months from the date of receipt.
Note	For research use only.

Data Image



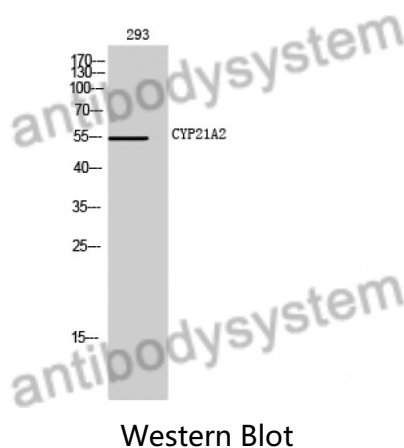
Recombinant Protein lysates were subjected to SDS PAGE followed by western blot with CYP21A2 antibody (PHC35501) at 1 μ g/ml.

Lane 1: Recombinant protein

Second Ab: Goat Anti-Rabbit IgG H&L Polyclonal antibody, HRP (PTB96431) at 0.1 μ g/mL.

Predict MW: 34 kDa

Observed MW: 34 kDa



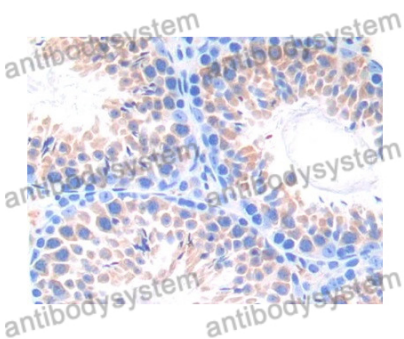
Various lysates were subjected to SDS PAGE followed by western blot with CYP21A2 antibody (PHC35501) at 1 μ g/ml.

Lane 1: HEK293

Second Ab: Goat Anti-Rabbit IgG H&L Polyclonal antibody, HRP (PTB96431) at 0.1 μ g/mL.

Predict MW: 55 kDa

Observed MW: 55 kDa



Immunohistochemical

Immunohistochemical analysis of mouse testis stained for CYP21A2 with PHC35501.