

Recombinant Human ATF6B Protein, N-GST & C-His

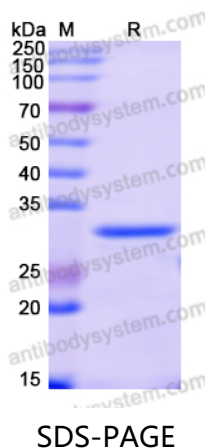
Summary

Catalog No.	YHK45401
Alternative Names	CREBL1, Protein G13, cAMP-responsive element-binding protein-like 1, Activating transcription factor 6 beta, cAMP response element-binding protein-related protein, Cyclic AMP-dependent transcription factor ATF-6 beta, G13, ATF6B, Creb-rp, ATF6-beta, cAMP-dependent transcription factor ATF-6 beta
Form	Lyophilized
Storage buffer	Lyophilized from a solution in PBS pH 7.4, 0.02% NLS, 1mM EDTA, 4% Trehalose, 1% Mannitol.
Purity	>90% as determined by SDS-PAGE.
Applications	ELISA, Immunogen, SDS-PAGE, WB, Bioactivity testing in progress
Endotoxin level	Please contact with the lab for this information.
Expression system	E. coli
Accession	Q99941
Protein length	Ala2-Arg50
Nature	Recombinant
Predicted molecular weight	33.79 kDa
Stability and Storage	Use a manual defrost freezer and avoid repeated freeze thaw cycles. Store at 2 to 8°C for frequent use. Store at -20 to -80°C for twelve months from the date of receipt.
Reconstitution	Reconstitute in sterile water for a stock solution.

Recombinant Proteins & Antibodies

Species	Homo sapiens (Human)
Shipping	In general, proteins are provided as lyophilized powder/frozen liquid. They are shipped out with dry ice/blue ice unless customers require otherwise.
Note	For research use only.

Data Image



SDS PAGE for Recombinant Human ATF6B Protein