

Recombinant Human XRCC6 Protein, N-His

Summary

Catalog No.	YHC95901
Alternative Names	Lupus Ku autoantigen protein p70, 5'-dRP lyase Ku70, Thyroid-lupus autoantigen, XRCC6, CTC box-binding factor 75 kDa subunit, X-ray repair complementing defective repair in Chinese hamster cells 6, G22P1, X-ray repair cross-complementing protein 6, ATP-dependent DNA helicase 2 subunit 1, DNA repair protein XRCC6, TLAA, ATP-dependent DNA helicase II 70 kDa subunit, CTCBF, 70 kDa subunit of Ku antigen, Ku70, 5'-deoxyribose-5-phosphate lyase Ku70, CTC75
Form	Lyophilized
Storage buffer	Lyophilized from a solution in PBS pH 7.4, 0.02% NLS, 1mM EDTA, 4% Trehalose, 1% Mannitol.
Purity	>90% as determined by SDS-PAGE.
Applications	ELISA, Immunogen, SDS-PAGE, WB, Bioactivity testing in progress
Endotoxin level	Please contact with the lab for this information.
Expression system	E. coli
Accession	P12956
Protein length	Asp36-Lys238
Nature	Recombinant
Predicted molecular weight	25.46 kDa
Stability and Storage	Use a manual defrost freezer and avoid repeated freeze thaw cycles. Store at 2 to 8°C for frequent use. Store at -20 to -80°C for twelve months from the date of receipt.

Recombinant Proteins & Antibodies**Reconstitution**

Reconstitute in sterile water for a stock solution. A copy of datasheet will be provided with the products, please refer to it for details.

Species

Homo sapiens (Human)

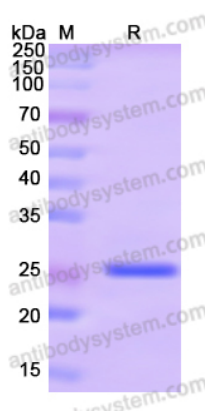
Shipping

In general, proteins are provided as lyophilized powder/frozen liquid. They are shipped out with dry ice/blue ice unless customers require otherwise.

Note

For research use only.

Data Image



SDS-PAGE

SDS PAGE for Recombinant Human XRCC6 Protein