

Recombinant Human PMEL Protein, N-His

Summary

Catalog No.	YHE28701
Alternative Names	ME20M, Melanocyte protein PMEL, Silver locus protein homolog, Secreted melanoma-associated ME20 antigen, D12S53E, 95 kDa melanocyte-specific secreted glycoprotein, SILV, P100, Premelanosome protein, PMEL17, ME20S, PMEL, ME20-S, ME20-M, P26, P1, Melanocytes lineage-specific antigen GP100, Melanocyte protein Pmel 17, Melanoma-associated ME20 antigen
Form	Lyophilized
Storage buffer	Lyophilized from a solution in PBS pH 7.4, 0.02% NLS, 1mM EDTA, 4% Trehalose, 1% Mannitol.
Purity	>90% as determined by SDS-PAGE.
Applications	ELISA, Immunogen, SDS-PAGE, WB, Bioactivity testing in progress
Endotoxin level	Please contact with the lab for this information.
Expression system	E. coli
Accession	P40967
Protein length	Gln65-Thr299
Nature	Recombinant
Predicted molecular weight	27.62 kDa
Stability and Storage	Use a manual defrost freezer and avoid repeated freeze thaw cycles. Store at 2 to 8°C for frequent use. Store at -20 to -80°C for twelve months from the date of receipt.

Recombinant Proteins & Antibodies**Reconstitution**

Reconstitute in sterile water for a stock solution. A copy of datasheet will be provided with the products, please refer to it for details.

Species

Homo sapiens (Human)

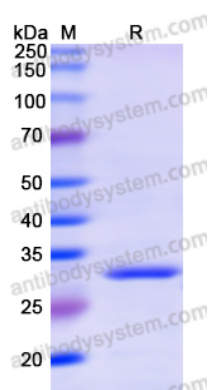
Shipping

In general, proteins are provided as lyophilized powder/frozen liquid. They are shipped out with dry ice/blue ice unless customers require otherwise.

Note

For research use only.

Data Image



SDS-PAGE

SDS PAGE for Recombinant Human PMEL Protein