

Research Grade Rovelizumab

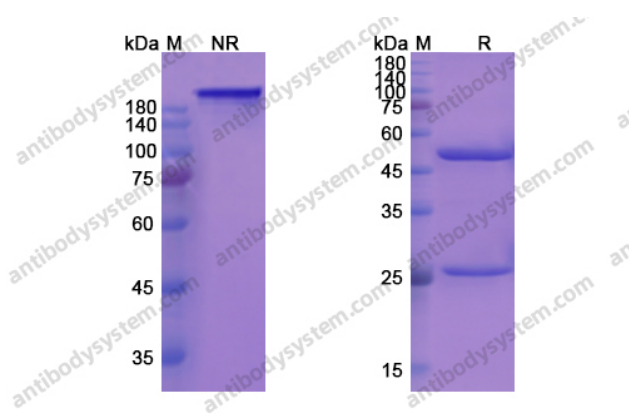
Summary

Catalog No.	DHC13102
Alternative Names	Bispecific, Hu23F2G, 23F2G, CAS: 339086-79-2
Clone ID	Rovelizumab
Host species	Humanized
Species reactivity	Human
Form	Liquid
Storage buffer	0.01M PBS, pH 7.4.
Concentration	1 mg/ml
Purity	>95% as determined by SDS-PAGE.
Clonality	Monoclonal
Isotype	IgG4-nd
Applications	Research Grade Biosimilar
Target	Complement receptor C3 subunit beta, Cell surface adhesion glycoproteins LFA-1/CR3/p150,95 subunit beta, Integrin beta-2, MFI7, CD18, ITGB2, CD11A, Leukocyte function-associated molecule 1 alpha chain, Leukocyte adhesion glycoprotein LFA-1 alpha chain, LFA-1A, CD11 antigen-like family member A, CD11a, ITGAL, Integrin alpha-L, CR-3 alpha chain, Cell surface glycoprotein MAC-1 subunit alpha, Leukocyte adhesion receptor MO1, ITGAM, CD11b, CD11 antigen-like family member B, Integrin alpha-M, CR3A, CD11B, Neutrophil adherence receptor
Purification	Protein A/G purified from cell culture supernatant.

Recombinant Proteins & Antibodies

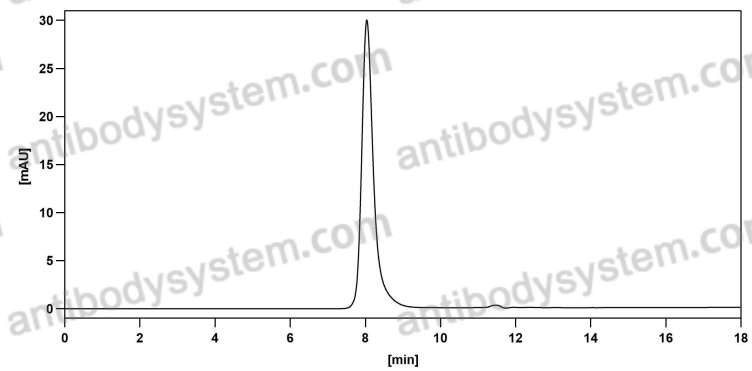
Endotoxin level	Please contact with the lab for this information.
Expression system	Mammalian Cells
Accession	P05107 & (P20701 + P11215)
Stability and Storage	Use a manual defrost freezer and avoid repeated freeze-thaw cycles. Store at 4°C short term (1-2 weeks). Store at -20°C 12 months. Store at -80°C long term.
Note	For research use only. Not suitable for clinical or therapeutic use.

Data Image



SDS PAGE for Rovelizumab

SDS-PAGE



The purity of this product is >95% as determined by SEC-HPLC.

SEC-HPLC