

# Anti-CH1&CH2/Allergen Fel d I-A&B Antibody (SAA0615)

## Summary

---

<b>Catalog No.</b>	RFK29901
<b>Clone ID</b>	SAA0615
<b>Host species</b>	Human
<b>Species reactivity</b>	Cat
<b>Form</b>	Liquid
<b>Storage buffer</b>	0.01M PBS, pH 7.4.
<b>Concentration</b>	1 mg/ml
<b>Purity</b>	>95% as determined by SDS-PAGE.
<b>Clonality</b>	Monoclonal
<b>Isotype</b>	IgG4
<b>Applications</b>	ELISA, SPR
<b>Target</b>	CH2, AG4, Major allergen I polypeptide chain 2, Allergen Cat-1, Allergen Fel d I-B, Allergen FdI, Fel dI, Fel d 1-B, CH1, AG4, Major allergen I polypeptide chain 1, Allergen Cat-1, Allergen Fel d I-A, Allergen FdI, Fel dI, Fel d 1-A
<b>Purification</b>	Protein A/G purified from cell culture supernatant.
<b>Endotoxin level</b>	Please contact with the lab for this information.
<b>Accession</b>	P30438 & P30440

**Stability and Storage**

Use a manual defrost freezer and avoid repeated freeze-thaw cycles.

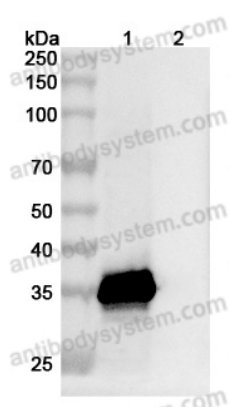
Store at 4°C short term (1-2 weeks). Store at -20°C 12 months. Store at -80°C long term.

**Note**

For research use only.

## Data Image

---



Western blot

Various lysates were subjected to SDS PAGE followed by western blot with Cat CH2 antibody (RFK29901) at 1µg/ml.

Lane 1: Cat CH2 transfected HEK293 cell lysate

Lane 2: Non-transfected HEK293 cell lysate

Second Ab: Goat Anti-Human IgG H&L Polyclonal antibody, HRP (PHB96431) at 0.1 µg/mL.

Predict MW: 35 kDa

Observed MW: 35 kDa