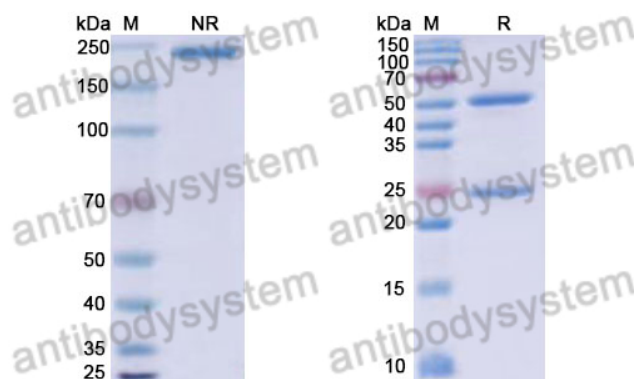


Human IgG1 (K409R/E356D/M358L), kappa Isotype Control Antibody (HyHEL-10)

Summary

Catalog No.	RHJ92819
Clone ID	HyHEL-10
Host species	Human
Form	Liquid
Storage buffer	0.01M PBS, pH 7.4.
Concentration	0.51 mg/ml
Purity	>95% as determined by SDS-PAGE.
Clonality	Monoclonal
Isotype	IgG1 (K409R/E356D/M358L), kappa
Applications	FCM, Isotype Control, In vivo Control
Target	Human IgG1 (K409R/E356D/M358L),kappa
Purification	Protein A/G purified from cell culture supernatant.
Endotoxin level	Please contact with the lab for this information.
Stability and Storage	Use a manual defrost freezer and avoid repeated freeze-thaw cycles. Store at 4°C short term (1-2 weeks). Store at -20°C 12 months. Store at -80°C long term.
Note	For research use only.

Data Image



SDS-PAGE

SDS PAGE for Human IgG1 (K409R/E356D/M358L),
kappa Isotype Control Antibody (HyHEL-10)