

# Human IgG1 (L234F/L235E/P331S), kappa Isotype Control Antibody (HyHEL-10)

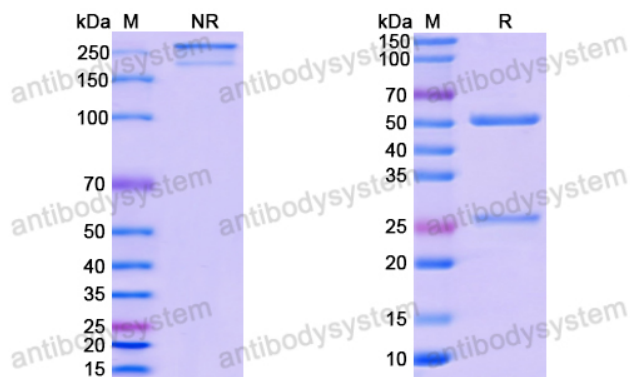
## Summary

---

<b>Catalog No.</b>	RHJ92806
<b>Clone ID</b>	HyHEL-10
<b>Host species</b>	Human
<b>Form</b>	Liquid
<b>Storage buffer</b>	0.01M PBS, pH 7.4.
<b>Concentration</b>	1.9 mg/ml
<b>Purity</b>	>95% as determined by SDS-PAGE.
<b>Clonality</b>	Monoclonal
<b>Isotype</b>	IgG1 (L234F/L235E/P331S), kappa
<b>Applications</b>	FCM, Isotype Control, In vivo Control
<b>Target</b>	Human IgG1 (L234F/L235E/P331S),kappa
<b>Purification</b>	Protein A/G purified from cell culture supernatant.
<b>Endotoxin level</b>	Please contact with the lab for this information.
<b>Stability and Storage</b>	Use a manual defrost freezer and avoid repeated freeze-thaw cycles. Store at 4°C short term (1-2 weeks). Store at -20°C 12 months. Store at -80°C long term.
<b>Note</b>	For research use only.

## Data Image

---



SDS PAGE for Human IgG1 (L234F/L235E/P331S),  
kappa Isotype Control Antibody (HyHEL-10)

SDS-PAGE