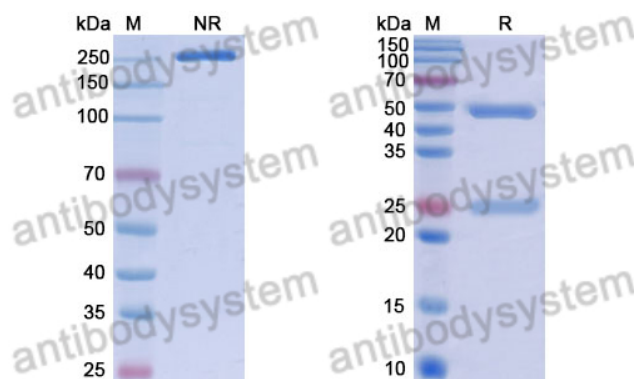


Human IgG1 (K214R/K447A), kappa Isotype Control Antibody (HyHEL-10)

Summary

| | |
|------------------------------|-----------------------------------------------------------------------------------------------------------------------------------------------------------------|
| Catalog No. | RHJ92804 |
| Clone ID | HyHEL-10 |
| Host species | Human |
| Form | Liquid |
| Storage buffer | 0.01M PBS, pH 7.4. |
| Concentration | 1 mg/ml |
| Purity | >95% as determined by SDS-PAGE. |
| Clonality | Monoclonal |
| Isotype | IgG1 (K214R/K447A), kappa |
| Applications | FCM, Isotype Control, In vivo Control |
| Target | Human IgG1 (K214R/K447A),kappa |
| Purification | Protein A/G purified from cell culture supernatant. |
| Endotoxin level | Please contact with the lab for this information. |
| Stability and Storage | Use a manual defrost freezer and avoid repeated freeze-thaw cycles. Store at 4°C short term (1-2 weeks). Store at -20°C 12 months. Store at -80°C long term. |
| Note | For research use only. |

Data Image



SDS PAGE for Human IgG1 (K214R/K447A), kappa
Isotype Control Antibody (HyHEL-10)

SDS-PAGE