

InVivoMAb Anti-Human CD228/MELTF (Iv0104)

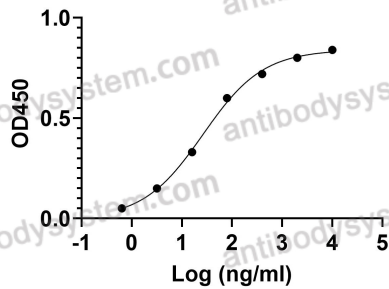
Summary

Catalog No.	VHC34301
Clone ID	Iv0104
Host species	Human
Species reactivity	Human
Form	Liquid
Storage buffer	0.01M PBS, pH 7.4.
Concentration	1 mg/ml
Purity	>95% as determined by SDS-PAGE.
Clonality	Monoclonal
Isotype	IgG1
Applications	ELISA, FCM, Neutralization
Target	CD228, Melanotransferrin, Melanoma-associated antigen p97, MAP97, MFI2, MELTF
Purification	Protein A/G purified from cell culture supernatant.
Endotoxin level	Please contact with the lab for this information.
Accession	P08582
Stability and Storage	Use a manual defrost freezer and avoid repeated freeze-thaw cycles. Store at 4°C short term (1-2 weeks). Store at -20°C 12 months. Store at -80°C long term.
Note	For research use only. Not suitable for clinical or therapeutic use.

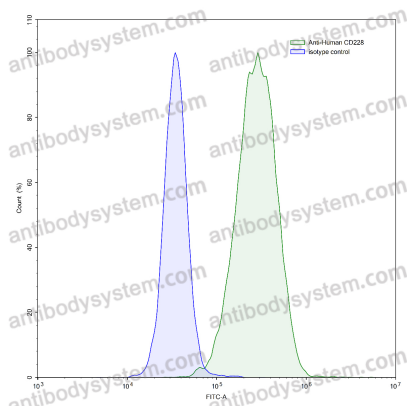
Data Image

Anti-Human CD228/MELTF (lv0104)
binds with CD228

EC50	26.49
------	-------



Bioactivity



Flow-cytometry

Detects CD228/MELTF in indirect ELISAs.

Flow-cytometry using anti-human CD228 antibody. A431 cells were stained with an irrelevant antibody (Blue Histogram) or an anti-human CD228 antibody monoclonal antibody (Catalog # VHC34301, Green Histogram) at a concentration of 5 µg/ml for 30 mins at RT. After washing, bound antibody was detected using a FITC conjugated goat anti-human antibody (Catalog # PHB96441) and cells analysed on a NovoCyte Flow Cytometer.