

# InVivoMAb Anti-Human CCL2/MCP-1 (Iv0077)

## Summary

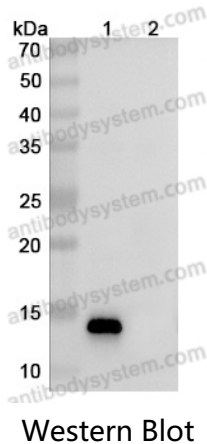
---

<b>Catalog No.</b>	VHC97801
<b>Clone ID</b>	Iv0077
<b>Host species</b>	Human
<b>Species reactivity</b>	Human
<b>Form</b>	Liquid
<b>Storage buffer</b>	0.01M PBS, pH 7.4.
<b>Concentration</b>	2.08 mg/ml
<b>Purity</b>	>95% as determined by SDS-PAGE.
<b>Clonality</b>	Monoclonal
<b>Isotype</b>	IgG1, kappa
<b>Applications</b>	ELISA, FCM, Neutralization
<b>Target</b>	HC11, MCP-1, MCP1, Monocyte chemotactic protein 1, Monocyte chemotactic and activating factor, Small-inducible cytokine A2, SCYA2, MCAF, Monocyte secretory protein JE, C-C motif chemokine 2, Monocyte chemoattractant protein 1, CCL2
<b>Purification</b>	Protein A/G purified from cell culture supernatant.
<b>Endotoxin level</b>	Please contact with the lab for this information.
<b>Accession</b>	P13500
<b>Stability and Storage</b>	Use a manual defrost freezer and avoid repeated freeze-thaw cycles. Store at 4°C short term (1-2 weeks). Store at -20°C 12 months. Store at -80°C long term.

**Note**

For research use only. Not suitable for clinical or therapeutic use.

## Data Image

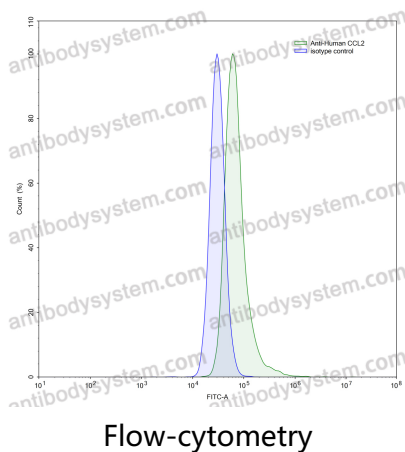


Various lysates were subjected to SDS PAGE followed by western blot with Anti Human CCL2/MCP-1 antibody [Iv0077] (VHC97801) at 1µg/ml.

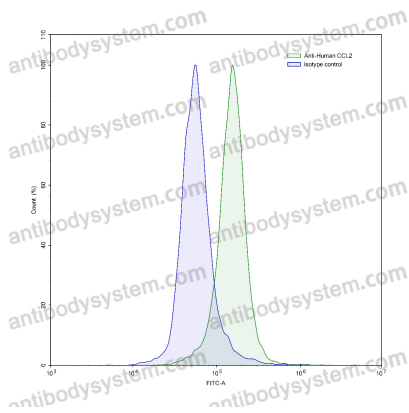
Lane 1: Human CCL2/MCP-1 transfected HEK293 cell lysate

Lane 2: Non-transfected HEK293 cell lysate

Second Ab: Goat Anti-Human IgG H&L Polyclonal antibody, HRP (PHB96431) at 0.1 µg/mL.



Flow-cytometry using anti-human CCL2 antibody. A549 cells were stained with an irrelevant antibody (Blue Histogram) or an anti-human CCL2 antibody monoclonal antibody (Catalog # VHC97801, Green Histogram) at a concentration of 5 µg/ml for 30 mins at RT. After washing, bound antibody was detected using a FITC conjugated goat anti-human antibody (Catalog # PHB96441) and cells analysed on a NovoCyte Flow Cytometer.



Flow-cytometry

Flow-cytometry using anti-human CCL2 antibody. Human peripheral blood lymphocytes were stained with an irrelevant antibody (Blue Histogram) or an anti-human CCL2 antibody monoclonal antibody (Catalog # VHC97801, Green Histogram) at a concentration of 5 µg/ml for 30 mins at RT. After washing, bound antibody was detected using a FITC conjugated goat anti-human antibody (Catalog # PHB96441) and cells analysed on a NovoCyt Flow Cytometer.